

KAREN SCHWANEBECK, RECORDER
MARION COUNTY IOWA

Prepared by Abie C. Davis, P.E. & L.S., 1428 Oregon St., Knoxville, IA 50138 (641) 842-5863

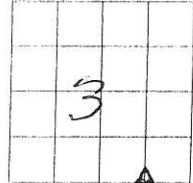
UNITED STATES PUBLIC LAND SURVEY CORNER CERTIFICATE
OF

Land survey Monuments situated in Section 3, Township 74N, Range 20W, of the Fifth Principal Meridian, Marion County, Iowa.

Previously recorded in N/A in County Recorders Office.

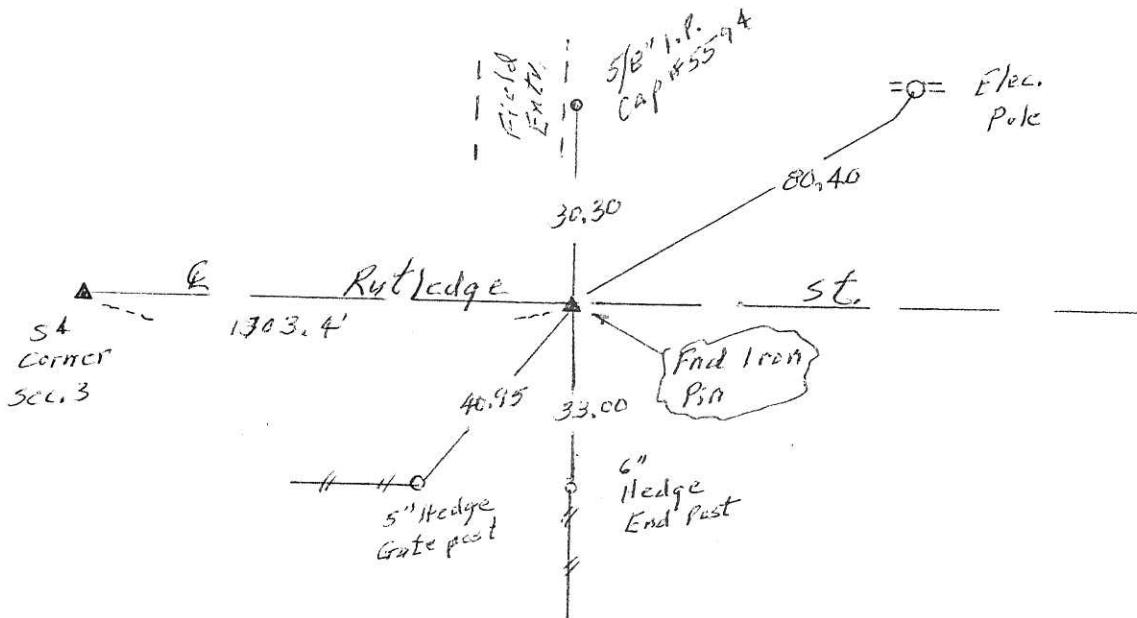
Show reason for preparing this certificate, the evidence and detailed procedures used in establishing the corner positions and monumentation found or placed (book, page, document number, etc.)

Monument Description and Remarks: End Iron Pin in line with fence south end on E road.



PLAN - VIEW

(Show a minimum of three reference ties to durable physical objects, relevant monuments and physical conditions that will enable recovery of the corner.)



I hereby certify that the survey work was completed and this land surveying document was prepared by me or under my direct personal supervision and that I am a duly licensed land surveyor under the laws of the state of Iowa

Signature: Abie C. Davis

Date: 5/29/19 Abie C. Davis, P.E. & L.S. Reg. No. 5594

My license renewal date is December 31, 2019

SEAL

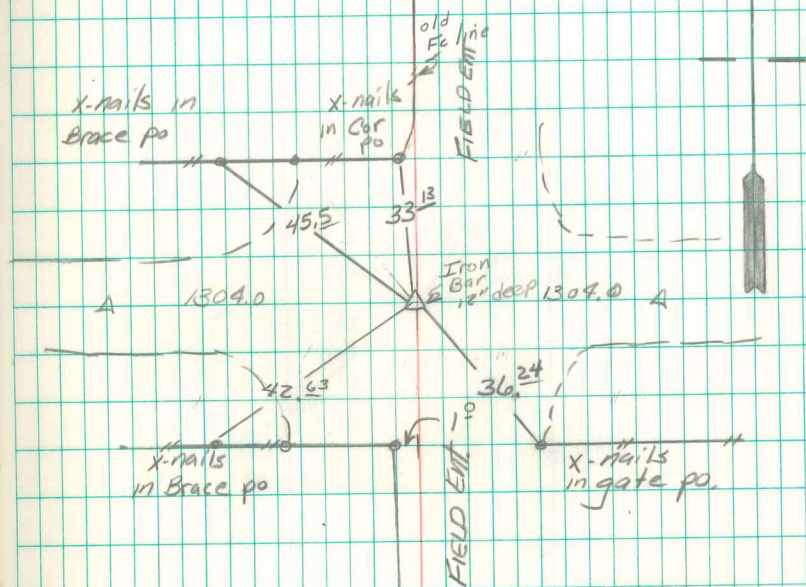


List Corners to be Indexed

Corners	Section	Twp	Range
SE Corner	3	74N	20W
SW & SE			

PL \$700 Cash - Ret Abie Davis

SW Cor SE 1/4 Sec. 3-74-20



Found 1" solid rod
 1.5' deep, set 1/2" x 1 1/4"
 steel rod on top
 12/3/1987