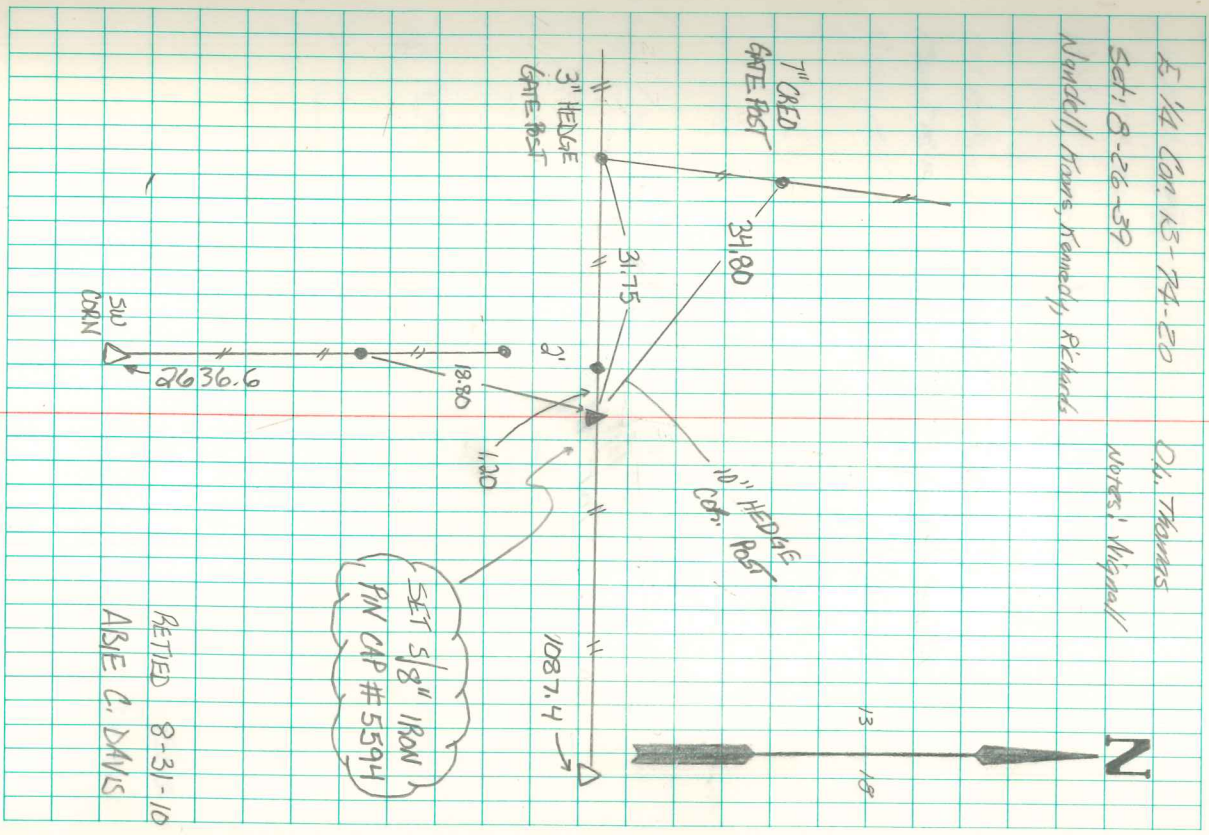


Found sand stone 14" x 12" x 6" and
12" x 9" x 2"

Set CM over broken gateway.
Large Stone on West side, small
stone on north.

E 1/4 Cor. K5-74-20
Set: 8-26-59
Nardell, Howe, Kennedy, Richards

Dr. Thomas
Notes: Wignall



RETTED 8-31-10
AISE G. DAVIS