

Found old cotton cor post put there before road was established, and found by Dk. Thomas on former survey, who stated said post was set on true corner. Ran line from North, east, and west, which verified its correct location.

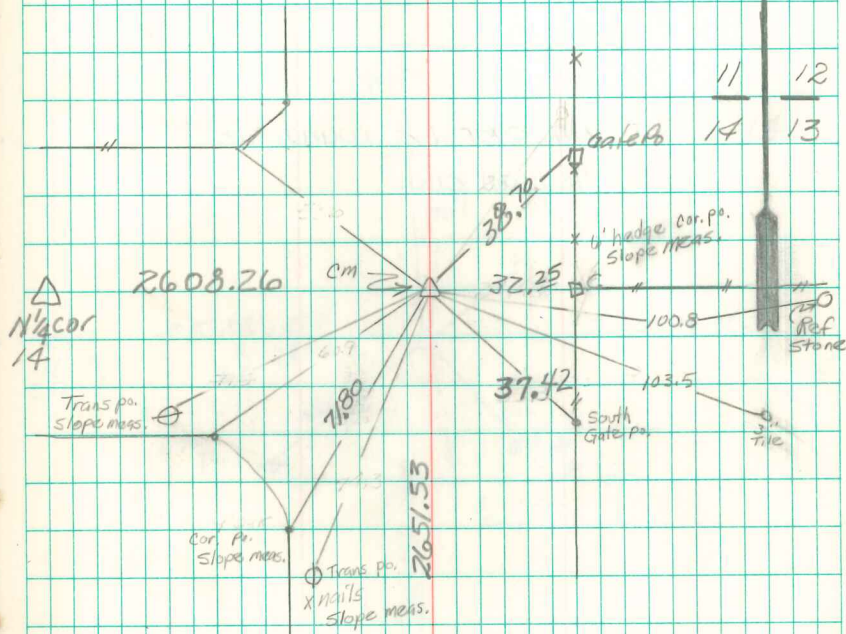
Set mon. over 1-2" horseshoe tile standing on end.

N.E. Cor. 14-14-20

Set: April 22-1942

Party: Kennedy
Shore

Notes: Kennedy



E 1/4 cor
Sec 14

Found & Retied

2/25/97 Dave Miller