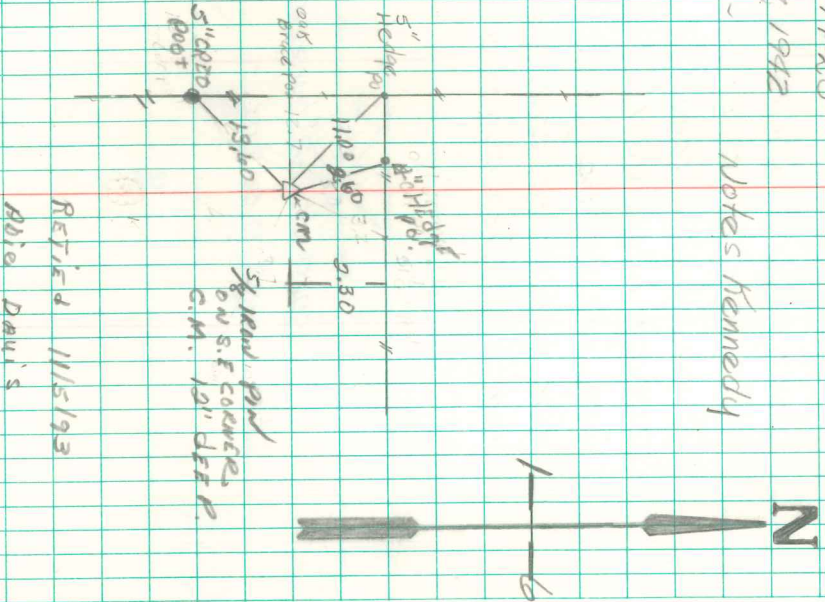


Ran line and chained north and south between sec. corners. Found 10" x 12' x 16" granite rock set on former survey by J.C. Nye on line between sec. corners 2643 north of south east con Sec. 1 Found no evidence of Watkins corner after digging hole 16 x 20' x 3' deep.

Placed stone found directly below its original position and set c.m. over 8" under surface.

E 1/4 con 1-74-80
Set July 17, 1942
Party: - - - -

Notes Kennedy



RETRIED 11/5/93
Boie Davis