

Prepared by: Abie C. Davis, P.E. & L.S., 1428 Oregon St., Knoxville, Iowa 50138 Phone: (515) 842-5863

# UNITED STATES PUBLIC LAND SURVEY CORNER CERTIFICATE

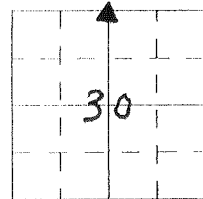
SLS19-94

Land survey Monuments situated in Section 30, Township 74N, Range 20W, of the Fifth Principal Meridian, Marion County, Iowa.

Previously recorded in N/A in County Recorders Office.

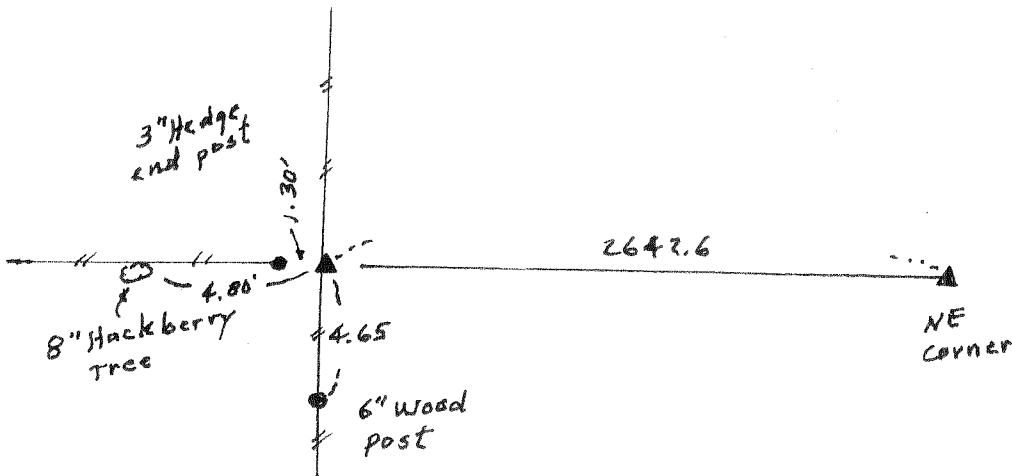
Show reason for preparing this certificate, the evidence and detailed procedures used in establishing the corner positions and monumentation found or placed

Monument Description and Remarks: Found C.M. Set 70<sup>d</sup>  
Spike above C.M.



## PLAN - VIEW

(Show a minimum of three reference ties to durable physical objects, relevant monuments and physical conditions that will enable recovery of the corner.)



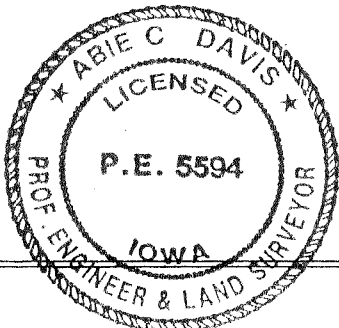
I hereby certify that the survey work was completed and this land surveying document was prepared by me or under my direct personal supervision and that I am a duly licensed land surveyor under the laws of the state of Iowa

Signature: Abie C. Davis  
Abie C. Davis, P.E. & L.S.

Date: 2/24/2014 Reg. No. 5594

My license renewal date is December 31, 2015

SEAL



### List Corners to be Indexed

Corners	Section	Twp	Range
<u>N4</u>	<u>30</u>	<u>74N</u>	<u>20W</u>

Found Sandstone 14" x 15" x 13"

Set c.m. and placed 1-A beneath,  
stone on top.

N 1/4 Cor. 30-74-20

Set: 6-10-40

Nandell, Frazier, Harger

Notes: Vignall

11

