

Prepared by: Abie C. Davis, P.E. & L.S., 1428 Oregon St., Knoxville, Iowa 50138 Phone: (515) 842-5863

UNITED STATES PUBLIC LAND SURVEY CORNER CERTIFICATE

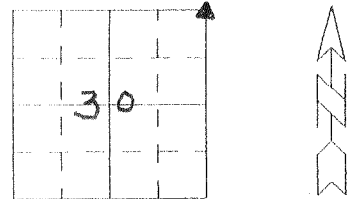
SLS19-94

Land survey Monuments situated in Section 30, Township 74 N, Range 20 W, of the Fifth Principal Meridian, Marion County, Iowa.

Previously recorded in N/A in County Recorders Office.

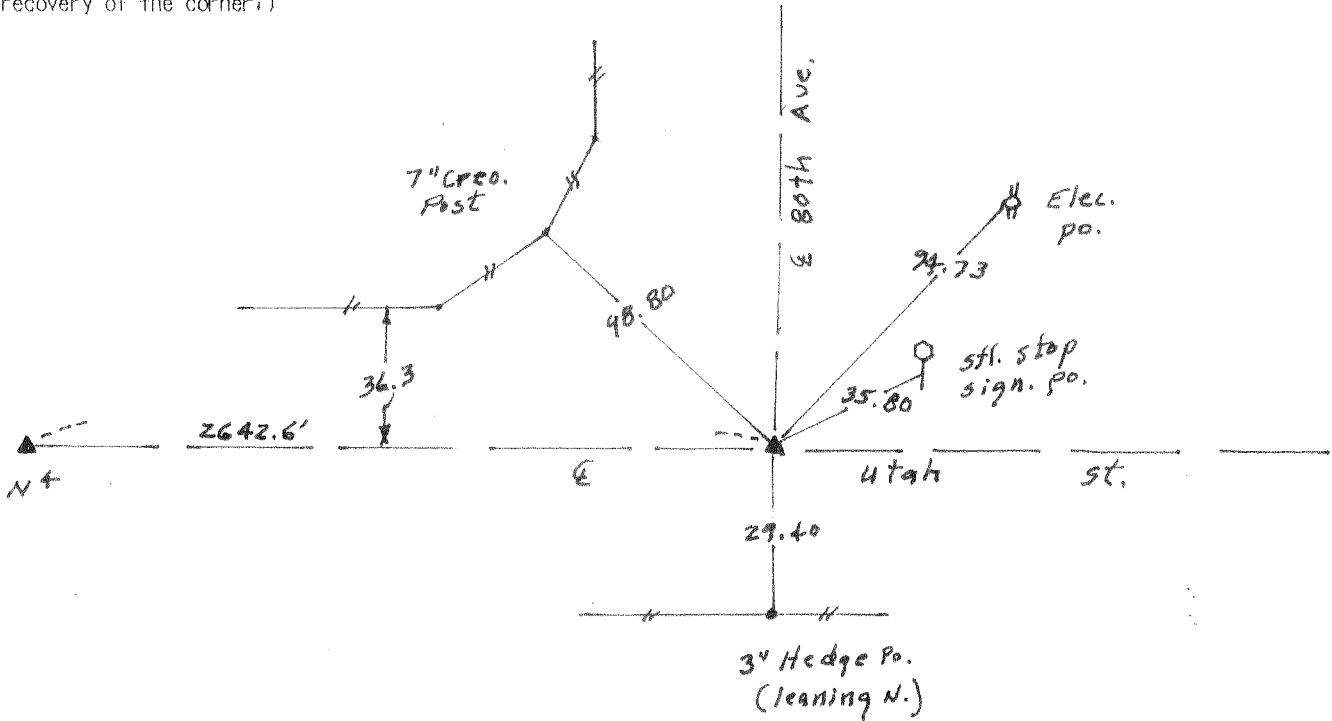
Show reason for preparing this certificate, the evidence and detailed procedures used in establishing the corner positions and monumentation found or placed

Monument Description and Remarks: Found 1/2" Iron Pin
over C.M.



PLAN - VIEW

(Show a minimum of three reference ties to durable physical objects, relevant monuments and physical conditions that will enable recovery of the corner.)



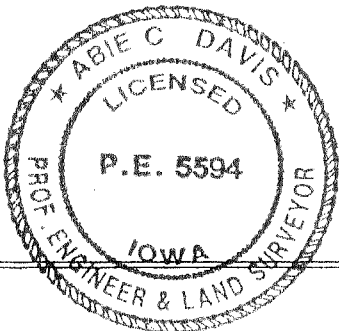
I hereby certify that the survey work was completed and this land surveying document was prepared by me or under my direct personal supervision and that I am a duly licensed land surveyor under the laws of the state of Iowa

Signature: Abie C. Davis
Abie C. Davis, P.E. & L.S.

Date: 2/24/2014 Reg. No. 5594

My license renewal date is December 31, 2015

SEAL



List Corners to be Indexed

Corners	Section	Twp	Range
NE	30	74 N	20 W

MAY 2, 1975

FOUND CON MON 15" DEEP
SET Wrench I.P. over mon.
RETIRED - Moll DEEGON, CANCER

