

KAREN SCHWANEBECK, RECORDER
MARION COUNTY IOWA

Prepared by: Abie C. Davis, P.E. & L.S., 1428 Oregon St., Knoxville, Iowa 50138 Phone: (515) 842-5863

UNITED STATES PUBLIC LAND SURVEY CORNER CERTIFICATE

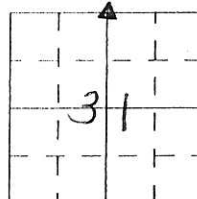
SLS19-94

Land survey Monuments situated in Section 31, Township 74 N, Range 20 W, of the Fifth Principal Meridian, MARION County, Iowa.

Previously recorded in N/A in County Recorders Office.

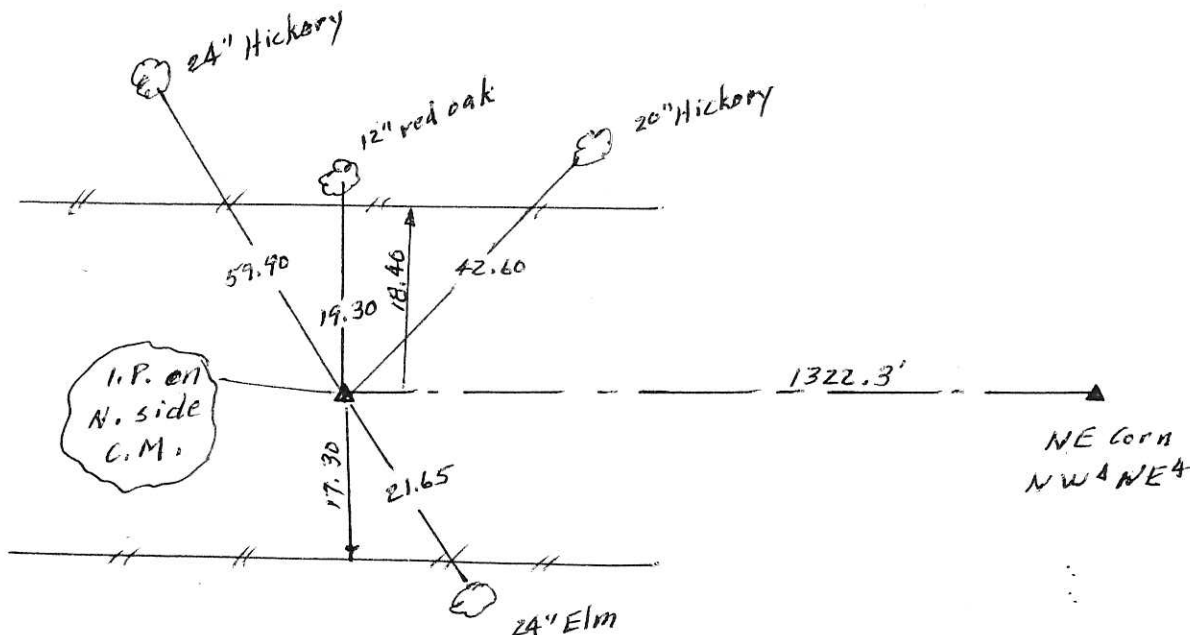
Show reason for preparing this certificate, the evidence and detailed procedures used in establishing the corner positions and monumentation found or placed

Monument Description and Remarks: Found C.M.B" deep with 5/8" Iron Pin on N. side with Marion County red cap



PLAN - VIEW

(Show a minimum of three reference ties to durable physical objects, relevant monuments and physical conditions that will enable recovery of the corner.)



I hereby certify that the survey work was completed and this land surveying document was prepared by me or under my direct personal supervision and that I am a duly licensed land surveyor under the laws of the state of Iowa

Signature: Abie C. Davis
Abie C. Davis, P.E. & L.S.

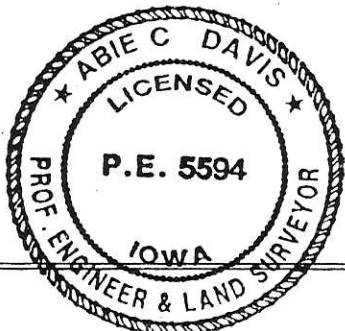
Date: 9/15/16 Reg. No. 5594

My license renewal date is December 31, 2017

List Corners to be Indexed

Corners	Section	Twp	Range
N4	31	74N	20 W

SEAL



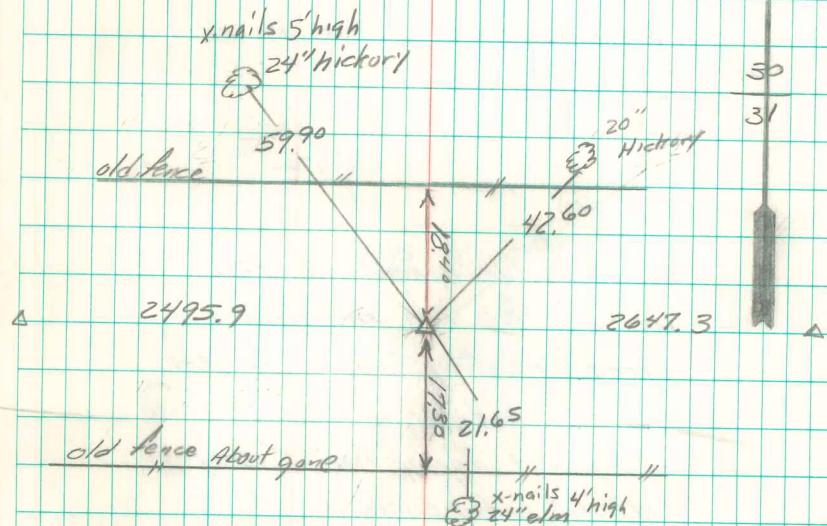
Rd \$100 Cash - Ret Abie Davis

Found pieces of 2" o tile 3" long,
No Stone.

Set C.M. and placed short
piece of tile at base. Stake
on top of C.M. Red-Head in Stake.

N 1/4 Cor. 31-74-20

Set: 6-11-40 (Light Rain) Notes: Wignall
Kennedy, Ogden, Shore, Mitchell



Found CM 8" deep from old
ties, set 5/8" iron pin with
Marion Co. Cap. on North
side. 4/19/02
Pirgan, McCombs, Hatch