



Document 17-852

Book 2017 Page 852 Type CORNR Pages 1  
Date 2/28/2017 Time 10:33 AM  
Rec Amt \$7.00

KAREN SCHWANEBECK, RECORDER  
MARION COUNTY IOWA

Prepared by Abie C. Davis, P.E. & L.S., 1428 Oregon St., Knoxville, IA 50138 (641) 842-5863

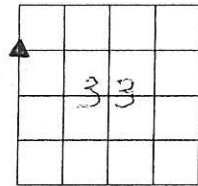
### UNITED STATES PUBLIC LAND SURVEY CORNER CERTIFICATE OF

Land survey Monuments situated in Section 33, Township 74N, Range 20W of the Fifth Principal Meridian, Marion County, Iowa.

Previously recorded in N/A in County Recorders Office.

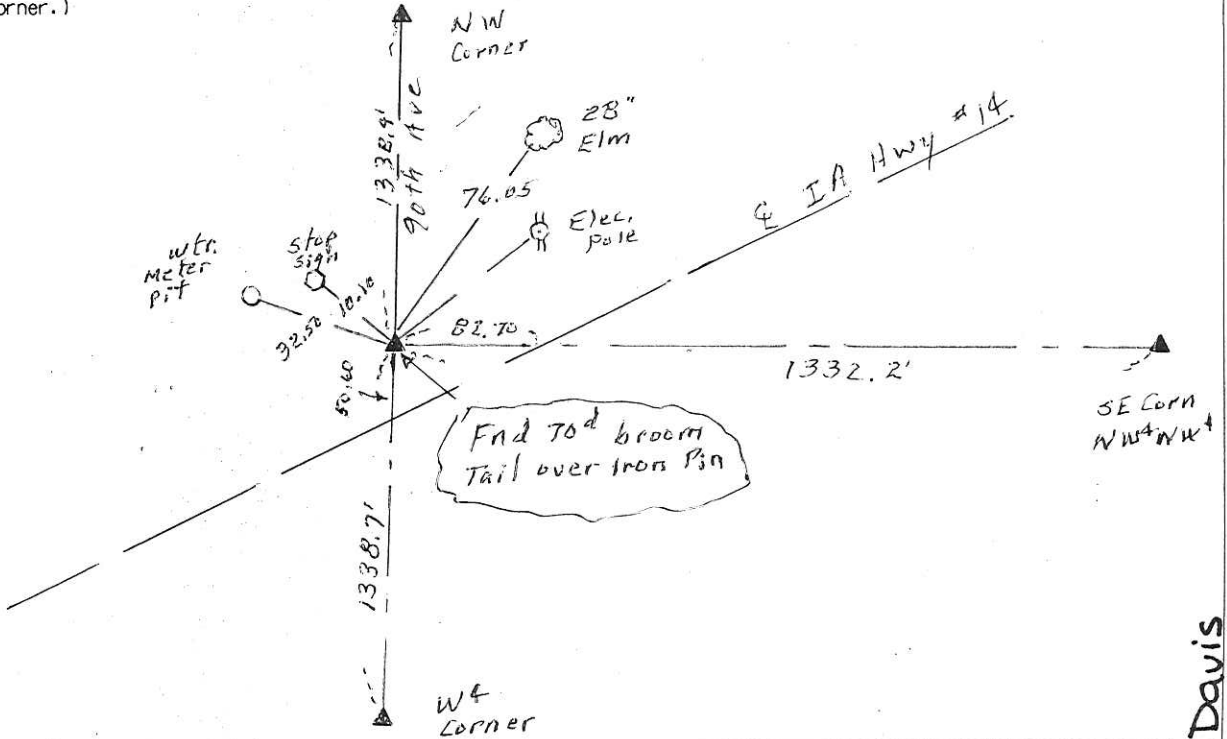
(book, page, document number, etc.)  
Show reason for preparing this certificate, the evidence and detailed procedures used in establishing the corner positions and monumentation found or placed

Monument Description and Remarks: Found 70<sup>d</sup> Spike  
w/ broom tail over Iron Pin



### PLAN - VIEW

(Show a minimum of three reference ties to durable physical objects, relevant monuments and physical conditions that will enable recovery of the corner.)



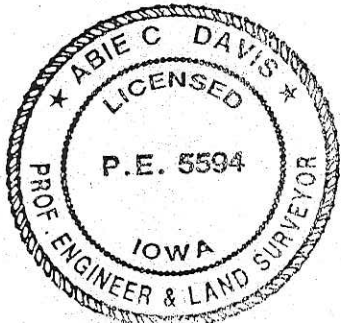
I hereby certify that the survey work was completed and this land surveying document was prepared by me or under my direct personal supervision and that I am a duly licensed land surveyor under the laws of the state of Iowa

Signature: Abie C. Davis  
Abie C. Davis, P.E. & L.S.

Date: 2/23/17 Reg. No. 5594

My license renewal date is December 31, 2017

SEAL



List Corners to be Indexed  
Corners Section Twp Range

SW Corn. 33 74N 20W  
NW<sup>4</sup>NW<sup>4</sup>

Ret Abie Davis

EX 14 - NE 1/4 Sec. 32-74-20

