



Document 17-850

Book 2017 Page 850 Type CORNR Pages 1
Date 2/28/2017 Time 10:30 AM
Rec Amt \$7.00

KAREN SCHWANEBECK, RECORDER
MARION COUNTY IOWA

Prepared by Abie C. Davis, P.E. & L.S., 1428 Oregon St., Knoxville, IA 50138 (641) 842-5863

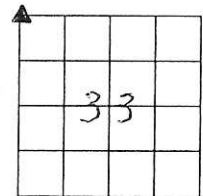
UNITED STATES PUBLIC LAND SURVEY CORNER CERTIFICATE OF

Land survey Monuments situated in Section 33, Township 74N, Range 20W, of the Fifth Principal Meridian, Marion County, Iowa.

Previously recorded in N/A in County Recorders Office.

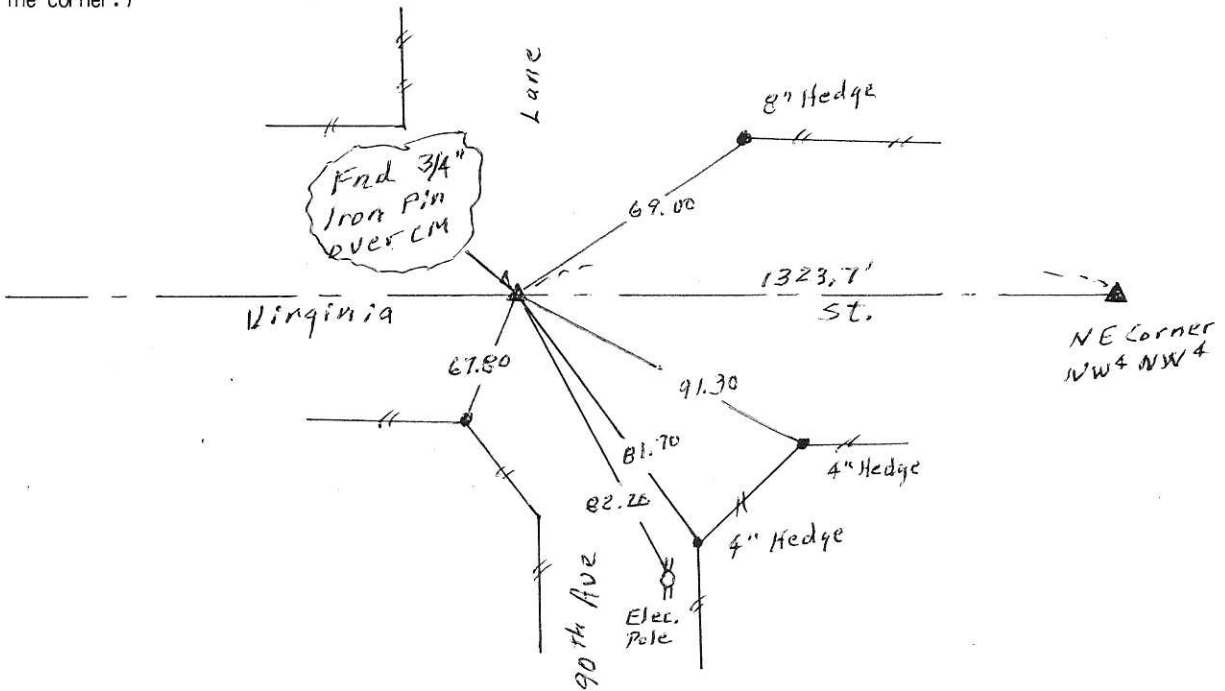
Show reason for preparing this certificate, the evidence and detailed procedures used in establishing the corner positions and monumentation found or placed

Monument Description and Remarks: Found 3/4" Iron Pin over CM.



PLAN - VIEW

(Show a minimum of three reference ties to durable physical objects, relevant monuments and physical conditions that will enable recovery of the corner.)



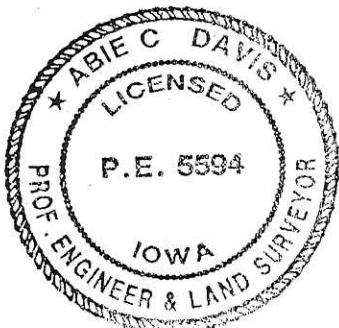
I hereby certify that the survey work was completed and this land surveying document was prepared by me or under my direct personal supervision and that I am a duly licensed land surveyor under the laws of the state of Iowa

Signature: Abie C. Davis

Date: 2/23/17 Abie C. Davis, P.E. & L.S. Reg. No. 5594

My license renewal date is December 31, 2017

SEAL



List Corners to be Indexed

Corners	Section	Twp	Range
NW	33	74N	20W

PL 15700 Cash - Ret Abie Davis

Found Gas pipe 30" long and 12" Iron
wagon hub.

Set C.M. over wagon hub and put
Gas pipe on North side.
C.M. 8" below surface of ground

N.E. Cor. 32-74-20

Set: 6-11-40

Wells, Luther, Crozier,

Notes: Stignall

N

