



Document 17-4756

Book 2017 Page 4756 Type CORNR Pages 1

Date 10/27/2017 Time 10:12 AM

Rec Amt \$7.00

KAREN SCHWANEBECK, RECORDER
MARION COUNTY IOWA

Prepared by Abie C. Davis, P.E. & L.S., 1428 Oregon St., Knoxville, IA 50138 (641) 842-5863

UNITED STATES PUBLIC LAND SURVEY CORNER CERTIFICATE OF

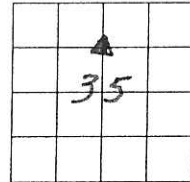
Land survey Monuments situated in Section 35, Township 74N, Range 20W, of the Fifth Principal Meridian, Marion County, Iowa.

Previously recorded in N/A in County Recorders Office.

Show reason for preparing this certificate, the evidence and detailed procedures used in establishing the corner positions and monumentation found or placed (book, page, document number, etc.)

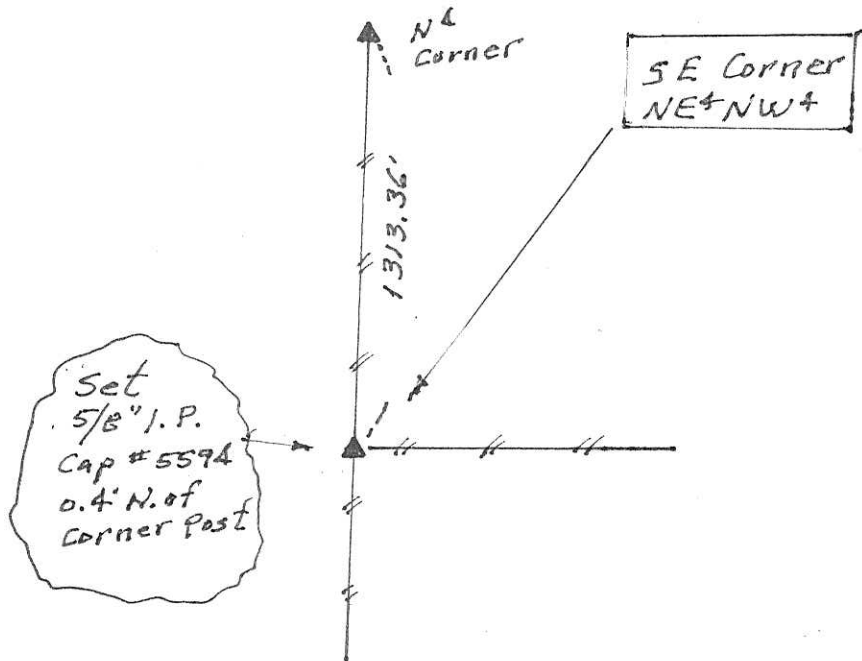
Monument Description and Remarks:

Set corner at the N. edge of 9" Hedge post 9' tall at the jct. of old property line fence N-S and E.



PLAN - VIEW

(Show a minimum of three reference ties to durable physical objects, relevant monuments and physical conditions that will enable recovery of the corner.)



I hereby certify that the survey work was completed and this land surveying document was prepared by me or under my direct personal supervision and that I am a duly licensed land surveyor under the laws of the state of Iowa

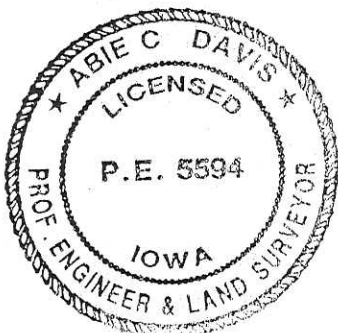
Signature: Abie C Davis

Abie C. Davis, P.E. & L.S.

Date: 10/26/17 Reg. No. 5594

My license renewal date is December 31, 2017

SEAL



List Corners to be Indexed

Corners	Section	Twp	Range
SE Corn. NE+NW+	35	74N	20W

Pds 100 cash - Ret Abie Davis

E 1/4 - NW 1/4 Sec. 35 T4-20

69

