

KAREN SCHWANEBECK, RECORDER
MARION COUNTY IOWA

Prepared By: J. Brian Morrissey, Morrissey Surveying & Consulting, LLC, 1405 Hwy. G28, Otley, Ia. 50214, 515-480-2531

UNITED STATES PUBLIC LAND SURVEY CORNER CERTIFICATE OF

Land Survey Monuments situated in Section 6, Township 74N, Range 20W, of the Fifth Principal Meridian, Marion County, Iowa.
Previously recorded in Bk. 1, P. 453 in the County Recorder's Office.
(book, page, document number, etc.)

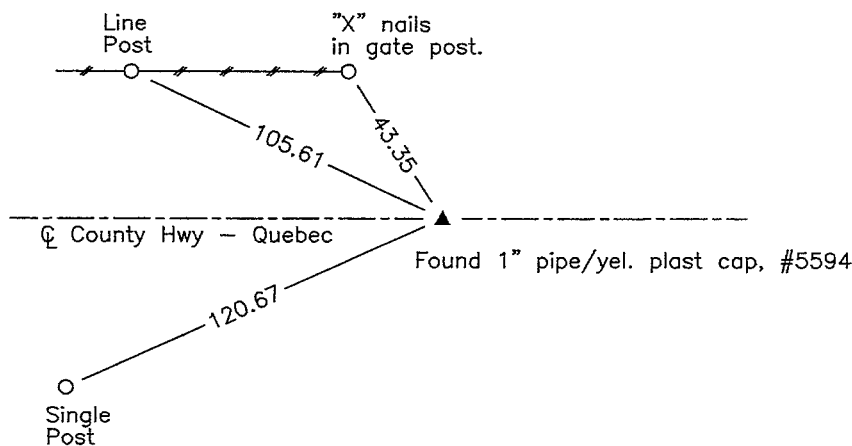
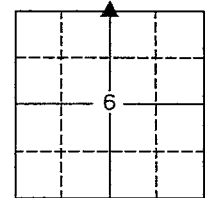
(Show reason for preparing this certificate, the evidence and detailed procedures used in establishing the corner positions and monumentation found or placed.)

Monument Description and Remarks: Found 1" pipe with yellow plastic cap #5594, over WPA Conc. Mon..
Accepted position. Previous ties altered or obliterated.

This Corner was used for a Plat of Survey for the west line of the SE 1/4, Section 6, T-74N, R-20W.

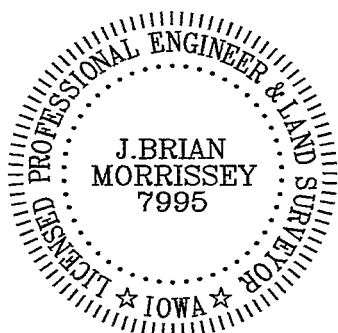
PLAN VIEW

(Show a minimum of three reference ties to durable physical objects, relevant monuments and physical conditions that will enable recovery of the corner.)



NW Corner, NE 1/4, Section 6

Date of Survey: 16-Apr-2021 NOTE: ALL TIES TO BRASS DISK OR YELLOW/ORANGE SURVEY MARKER UNLESS NOTED.



I hereby certify that this land surveying document was prepared and the related survey work was performed by me or under my direct personal supervision and that I am a duly Licensed Land Surveyor under the laws of the state of Iowa.

Signature: J. Brian Morrissey Date: 5/18/21
J. Brian Morrissey

License number 7995.
My license renewal date is December 31, 2021

1032-19-3/4

pt. # 7 - City Plat Morrissey Surveying

Found granite rock 12"x11"x7"
 over 2-2 1/2" A tile (Watkins tile)
 The top was filled with rock and
 concrete and concrete around tile.

Set mon. over one 2 1/2" A
 lowered in place. put rock
 on top of mon. The top rock
 5" under surface. Pieces of
 concrete & rock around mon. at base.

N 1/4 cor. 6-74-20

Set 7-30-41

Party: Kennedy,
 Shore, Luther

Notes: Kennedy

