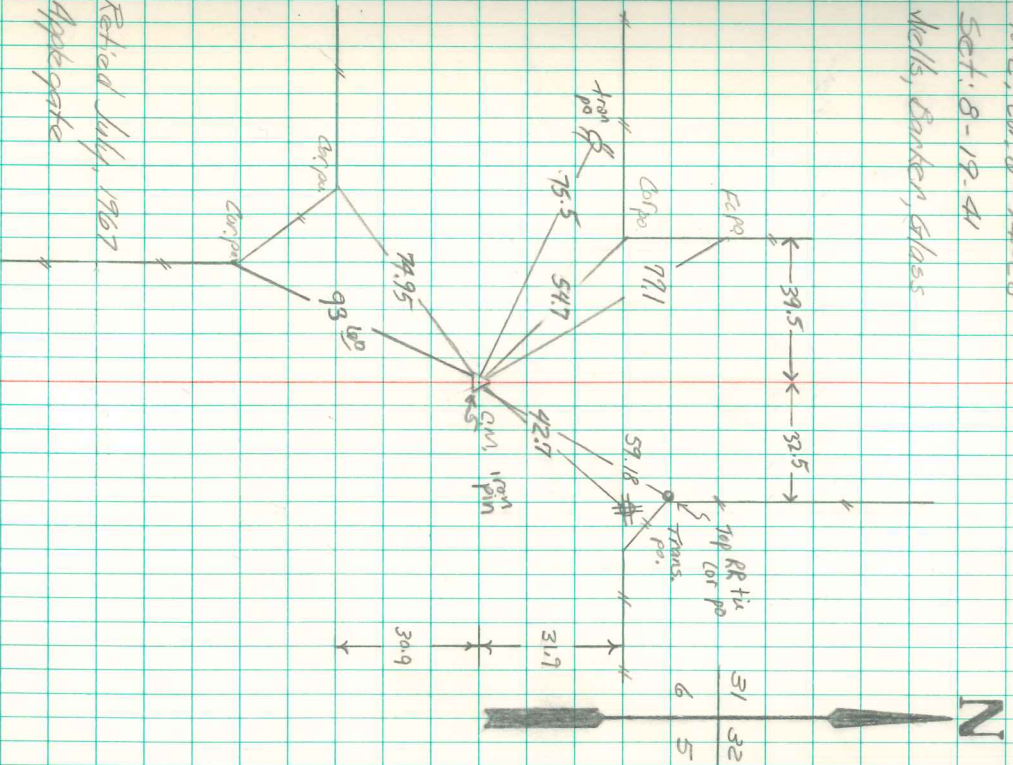


Found yellow sand stone 14" x 12" x 4" over 1-4" tile with concrete and 1 1/2" x 2 1/4" gas pipe in tile and broken disks and tile under 4" tile over Stone filled with concrete.
Right where we set man.

Set Man over broken dishes and tile 1-4" concrete filled tile and 1 1/2" x 2 1/4" gas pipe, yellow sand stone over man, 4" tile and concrete on South side of man.

N.E. Cor 6 - 74-20
Set: 8-19-41
Wells, Banker, Glass



Retired July, 1967
Applegate

Retired 6/15/92

OK 5/17/03 Albe Davis