

KAREN SCHWANEBECK, RECORDER  
MARION COUNTY IOWA

Prepared by Abie C. Davis, P.E. & L.S., 1428 Oregon St., Knoxville, IA 50138 (641) 842-5863

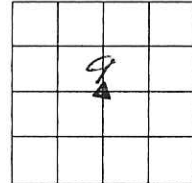
### UNITED STATES PUBLIC LAND SURVEY CORNER CERTIFICATE OF

Land survey Monuments situated in Section 9, Township 74N, Range 20W, of the Fifth Principal Meridian, Marion County, Iowa.

Previously recorded in N/A in County Recorders Office.

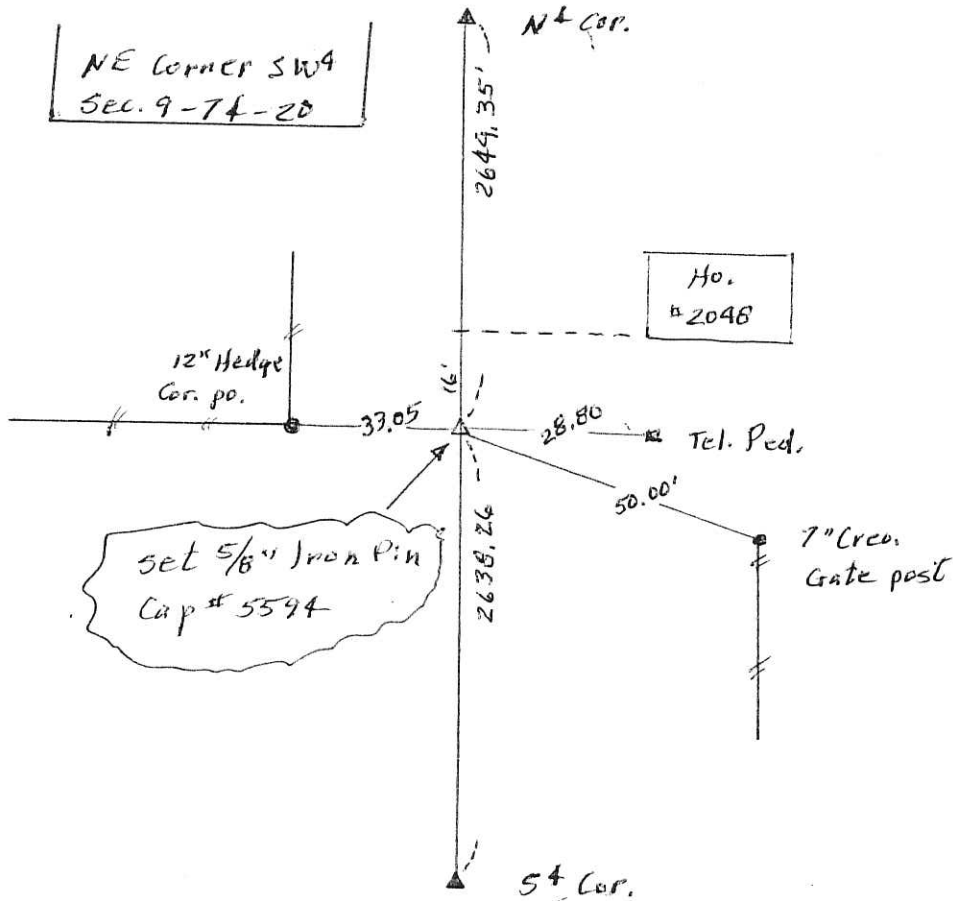
Show reason for preparing this certificate, the evidence and detailed procedures used in establishing the corner positions and monumentation found or placed

Monument Description and Remarks: Set corner at the intersection of an E-W property line fence and the centerline of 94th Place.



### PLAN - VIEW

(Show a minimum of three reference ties to durable physical objects, relevant monuments and physical conditions that will enable recovery of the corner.)



I hereby certify that the survey work was completed and this land surveying document was prepared by me or under my direct personal supervision and that I am a duly licensed land surveyor under the laws of the state of Iowa

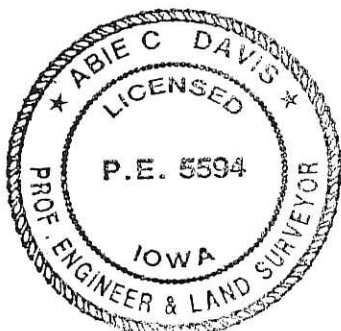
Signature: Abie C Davis

Abie C. Davis, P.E. & L.S.

Date: 5/5/16 Reg. No. 5594

My license renewal date is December 31, 2017

SEAL



#### List Corners to be Indexed

Corners	Section	Twp	Range
NE Corn	9	74N	20W
SW 4			

pat # 7 - Caon. Ret Abie Davis