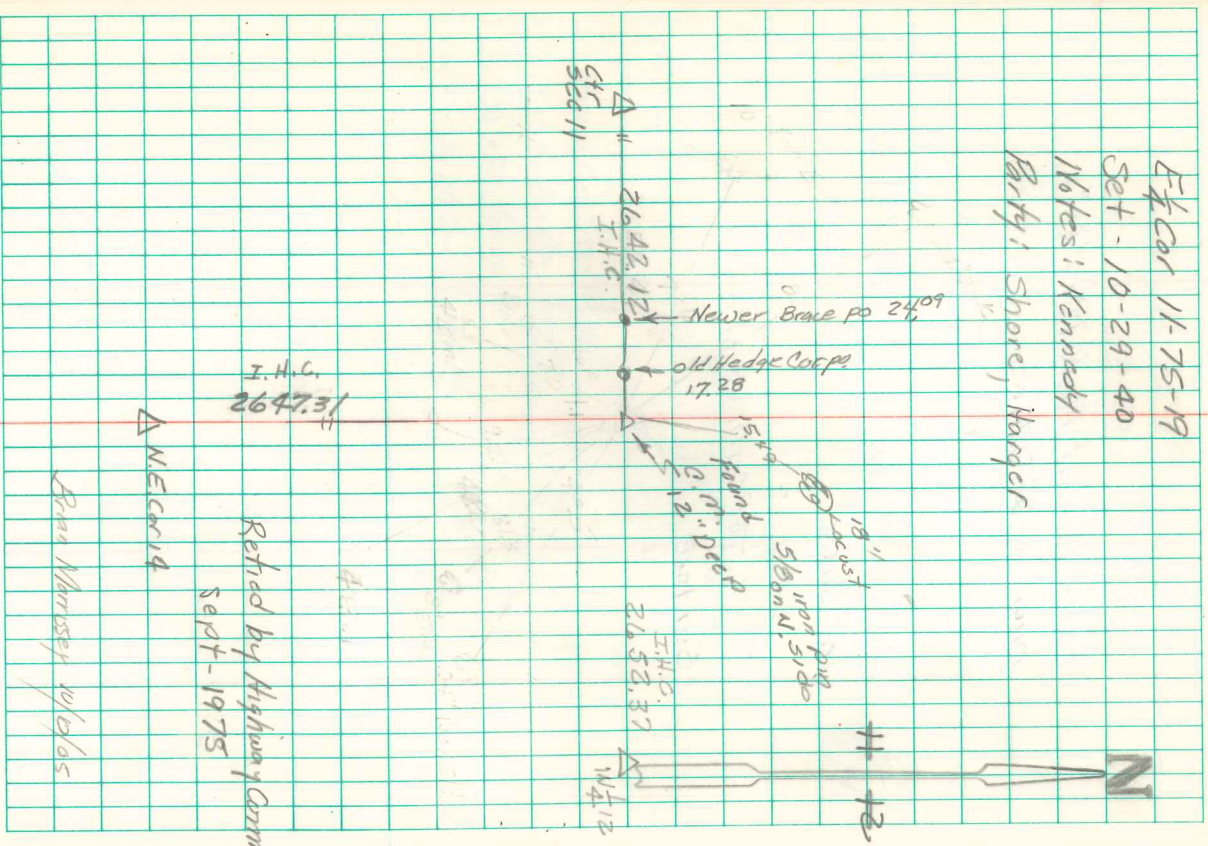


Found Sandstone 14" x 11" x 5"
over 1-2" DTls & Pieces.

Set C.M. on 1-2" DTls
Lowered in Place

Stone top C.M.

E¹/₂ Cor 11-75-19
Set - 10-29-40
Notes: Kennedy
Barry: Shore, Hanger



I.H.C.
26.47.31

Retrad by Highway Corinn
Sept-1975

Δ WE Cor 14

Brown Murresey 10/2/05