

INSTR. NO. 03-10454
 BOOK 2003 PAGE 10454
 RECD. FEE 11⁰⁰

03 DEC -3 AM 11:01

TRANSFER

Prepared by Abie C. Davis, P.E. & L.S., 1428 Oregon St., Knoxville, IA 50138 (641) 842-5863

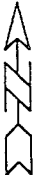
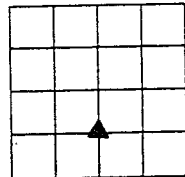
UNITED STATES PUBLIC LAND SURVEY CORNER CERTIFICATE
 OF

Land survey Monuments situated in Section 11, Township 75N, Range 19W, of the Fifth Principal Meridian, Marion County, Iowa.

Previously recorded in N/A in County Recorders Office.

Show reason for preparing this certificate, the evidence and detailed procedures used in establishing the corner positions and monumentation found or placed

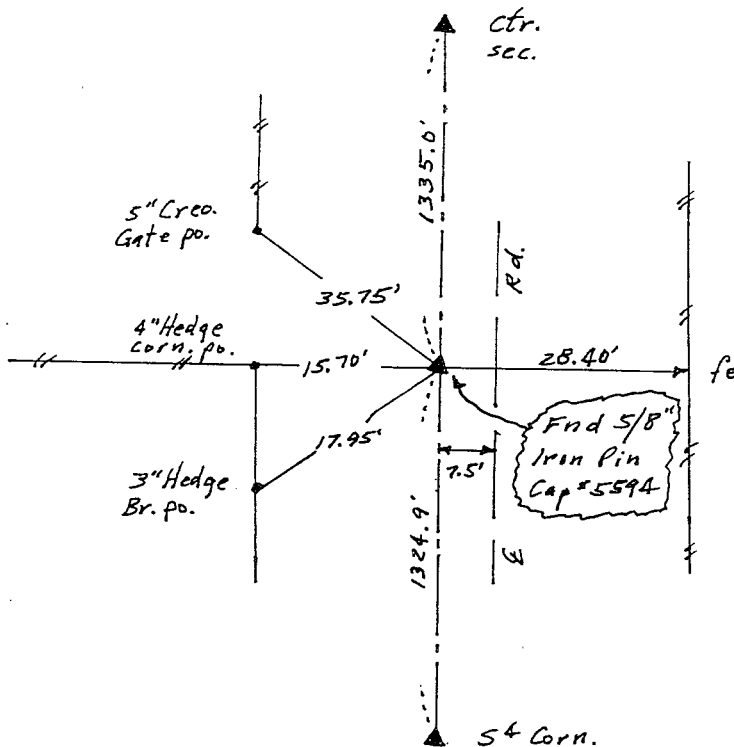
Monument Description and Remarks: Found 5/8" Iron Pin #5594 on line between ctr. section and S⁴ Corner and in line with fence west.



PLAN - VIEW

(Show a minimum of three reference ties to durable physical objects, relevant monuments and physical conditions that will enable recovery of the corner.)

NW Corner SW⁴ SE⁴
Sec. 11-75-19



Pd \$1100 Cash - Ret Abie Davis

I hereby certify that the survey work was completed and this land surveying document was prepared by me or under my direct personal supervision and that I am a duly licensed land surveyor under the laws of the state of Iowa

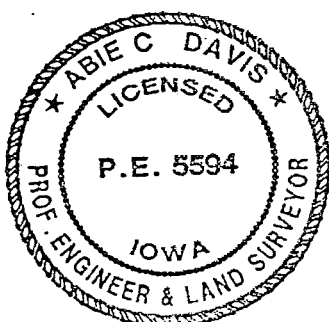
Signature: Abie C Davis

Abie C. Davis, P.E. & L.S.

Date: 12/1/03 Reg. No. 5594

My license renewal date is December 31, 2003

SEAL



List Corners to be Indexed			
Corners	Section	Twp	Range
NW Corn.	11	75N	19W
SW ⁴ SE ⁴			

1-1