

Prepared by Abie C. Davis, P.E. & L.S., 1428 Oregon St., Knoxville, IA 50138 (641) 842-5863

# UNITED STATES PUBLIC LAND SURVEY CORNER CERTIFICATE OF

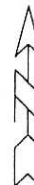
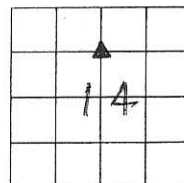
Land survey Monuments situated in Section 14, Township 75 N, Range 19 W of the Fifth Principal Meridian, MARION County, Iowa.

Previously recorded in N/A in County Recorders Office.

Show reason for preparing this certificate, the evidence and detailed procedures used in establishing the corner positions and monumentation found or placed

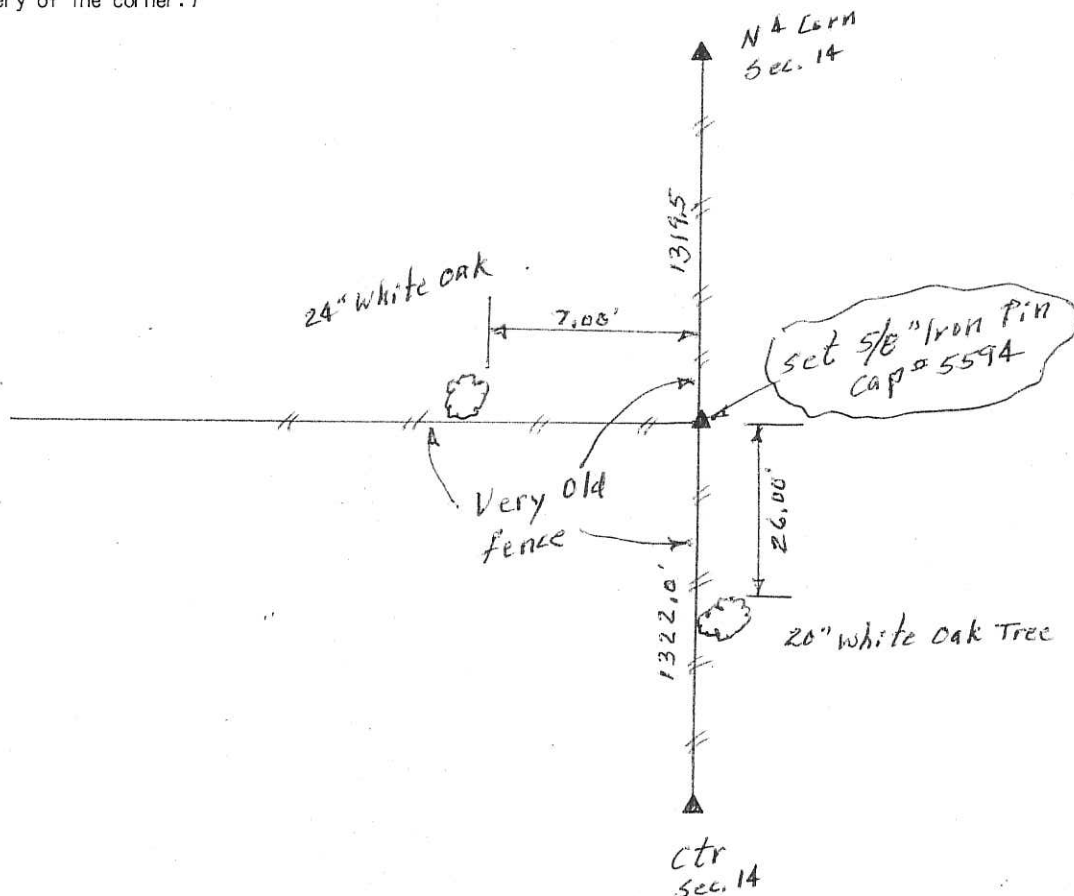
Monument Description and Remarks: Found 5" x 18"

sandstone standing vertical at very old  
fence corner. Set 5/8" iron pin on west  
side stone.



## PLAN - VIEW

(Show a minimum of three reference ties to durable physical objects, relevant monuments and physical conditions that will enable recovery of the corner.)



I hereby certify that the survey work was completed and this land surveying document was prepared by me or under my direct personal supervision and that I am a duly licensed land surveyor under the laws of the state of Iowa

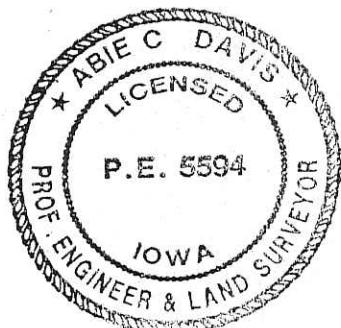
Signature: Abie C. Davis

Abie C. Davis, P.E. & L.S.

Date: 3/22/16 Reg. No. 5594

My license renewal date is December 31, 2017

SEAL



List Corners to be Indexed  
Corners Section Twp Range

SW Corn  
NW & NE 4      14      75 N      19 W