

Restabilished Corner!

Dug area 8'x8'x3' Deep at intersection
of Hedge E. N. E. S. & Down wire

E. E. & W. Found No Evidence except
broken pieces of lime stone on surface,
evidently the cor. stones was removed
by erosion or Excau.

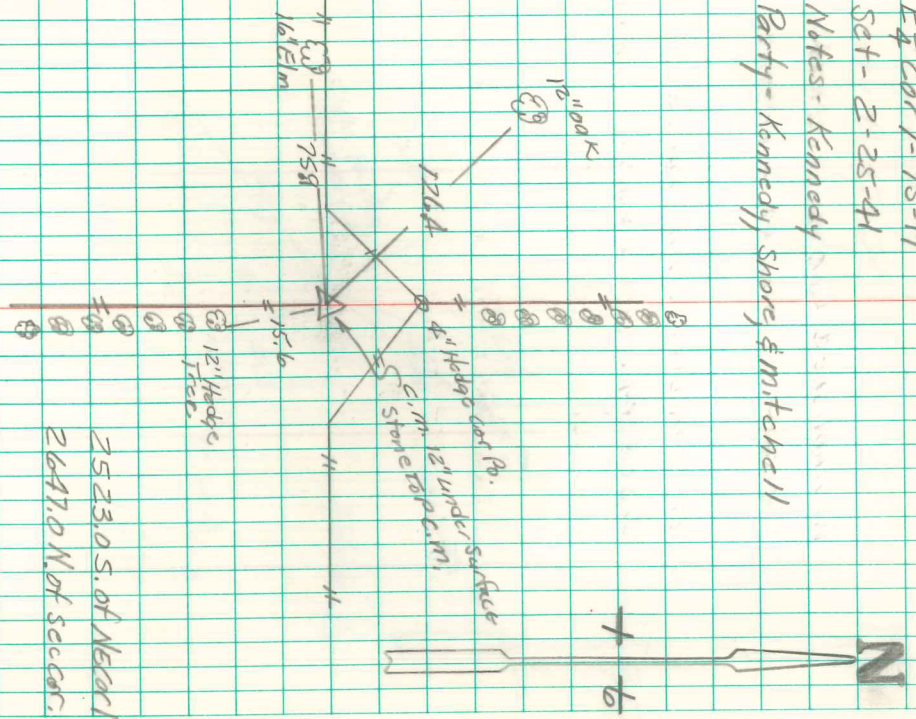
Established this cor. by placing
a lime stone under c.m.

Rock 8pc.m. 12" under surface

E 1/2 Cor 1-75-19

Sect - 2-25-41

Notes - Kennedy
Baty - Kennedy, Shors & Mitchell



25.23.0 S. of NE cor.
26.47.0 N. of Sec cor.