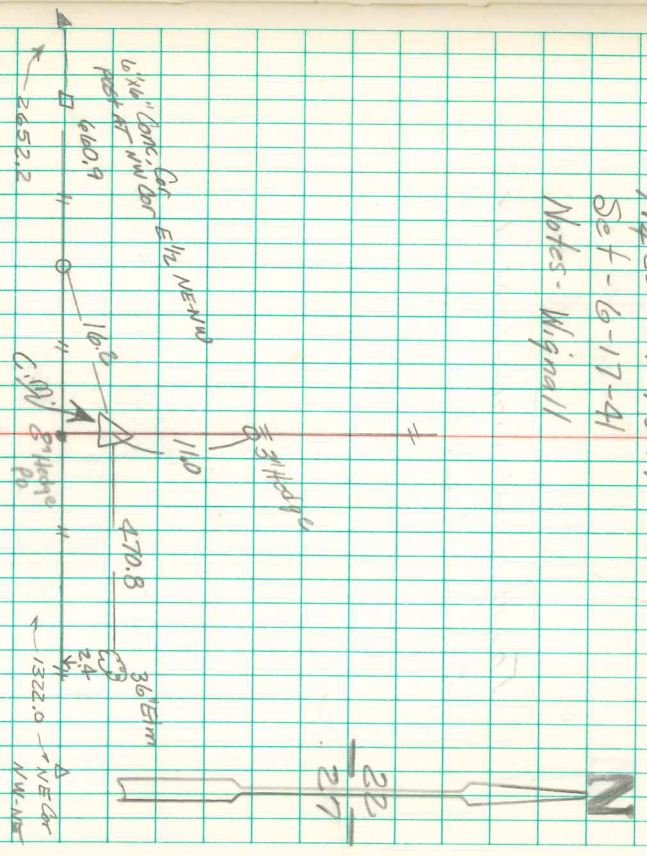


N¹/₂ Cor 37-75-19
Set - 6-17-41
Notes - Wignall

Found Small Lime Stone 11'x8'x3"
& some Pieces of 2" Tile
Set C.M. over Pieces of Tile
Stone over C.M.



June 24, 1996, Found Broken Conc Monument
on N. side of broken hedge post, found base of CM, 15"
deep. Set 5/8" x 50" Ruler on east & west sides of CM

Dec 3, 1996
Kerry Wignall