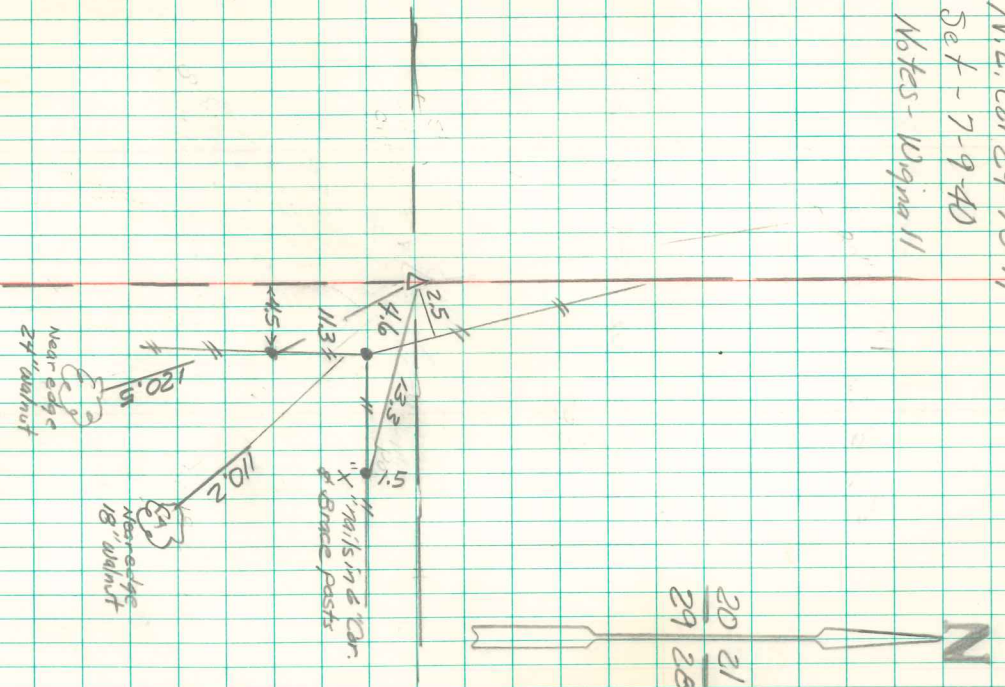


N.E. Cor 29-75-19
Set - 7-9-40
Notes - Virginia 11

20 21
29 28



Found Sandstone 12"x8"x4"
2-1/2" Thick

Set C.M. over 1-1/2" D.Tile
Pat. Stone Top C.M.

2. m. 9" Deep

August 8, 1926 Found broken sandstone

Above conc. slab. 45' 10" in 1910 W.P.A

Yes C.M. is 2' Deep. Set 5/8" 1.30" rebar

on east side of C.M. Set 3"x8"x10" limestone

Above 4"x16"x12" sandstone above C.M. Set

1/2"x1/2" rebar on east side of limestone

12/3/1926 Leroy Mygren