

KAREN SCHWANEBECK, RECORDER
MARION COUNTY IOWA

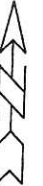
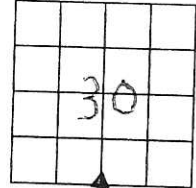
Prepared by Abie C. Davis, P.E. & L.S., 1428 Oregon St., Knoxville, IA 50138 (641) 842-5863

UNITED STATES PUBLIC LAND SURVEY CORNER CERTIFICATE OF

Land survey Monuments situated in Section 30, Township 75 N, Range 19 W, of the Fifth Principal Meridian, Marion County, Iowa.

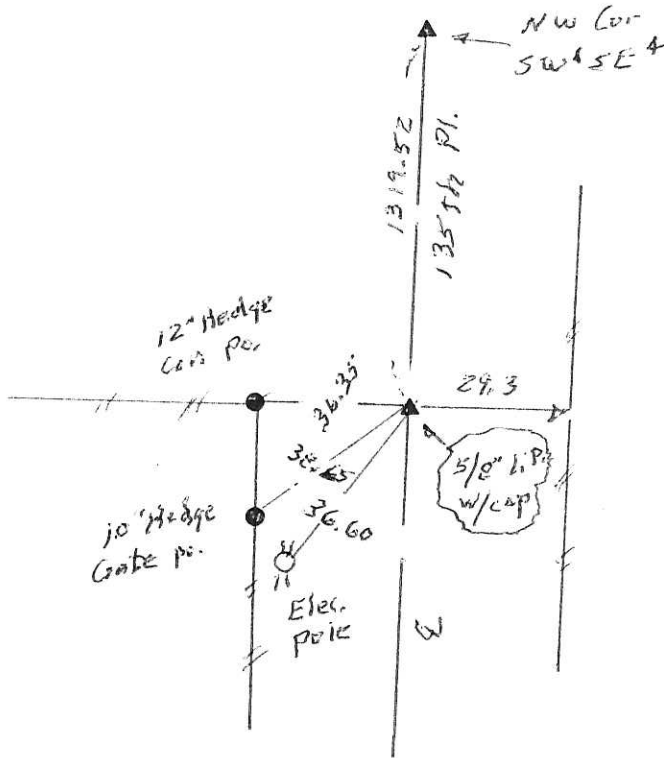
Previously recorded in N/A in County Recorders Office.
(book, page, document number, etc.)
Show reason for preparing this certificate, the evidence and detailed procedures used in establishing the corner positions and monumentation found or placed

Monument Description and Remarks: Found spike
on centerline of road in line with fence
west. Replaced spike with 5/8" Iron Pin
cap # 5594.



PLAN - VIEW

(Show a minimum of three reference ties to durable physical objects, relevant monuments and physical conditions that will enable recovery of the corner.)



I hereby certify that the survey work was completed and this land surveying document was prepared by me or under my direct personal supervision and that I am a duly licensed land surveyor under the laws of the state of Iowa

Signature: Abie C. Davis
Abie C. Davis, P.E. & L.S.
Date: 8/13/20 Reg. No. 5594

My license renewal date is December 31, 2021

SEAL



List Corners to be Indexed			
Corners	Section	Twp	Range
5+	30	75 N	19 W

pd. # 7- cash, Det Abie Davis