



Document 17-5729

Book 2017 Page 5729 Type CORNR Pages 1
Date 12/29/2017 Time 10:17 AM
Rec Amt \$7.00

KAREN SCHWANEBECK, RECORDER
MARION COUNTY IOWA

Prepared By: J. Brian Morrissey, Morrissey Surveying & Consulting, LLC, 1405 Hwy. G28, Otley, Ia. 50214, 515-480-2531

UNITED STATES PUBLIC LAND SURVEY CORNER CERTIFICATE OF

Land Survey Monuments situated in Section 32, Township 75N, Range 19W, of the Fifth Principal Meridian, Marion County, Iowa.
Previously recorded in Bk. 1, P. 268 in the County Recorder's Office.
(book, page, document number, etc.)

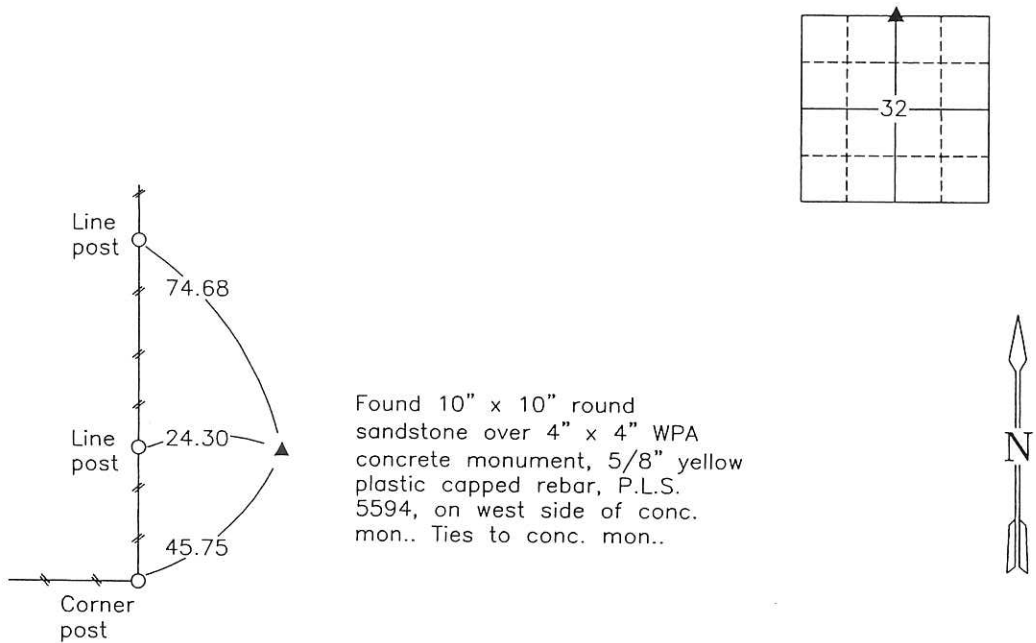
(Show reason for preparing this certificate, the evidence and detailed procedures used in establishing the corner positions and monumentation found or placed.)

Monument Description and Remarks: Found 10" x 10" round sandstone over 4" x 4" WPA concrete monument (CM), 5/8 yellow plastic capped rebar, P.L.S. 5594, on west side of CM. Ties to CM. Previous ties altered or obliterated.

This Corner was used for a Plat of Survey for Parcels D and E in Sec. 32, recorded in Bk. 2017, P. 5071.

PLAN VIEW

(Show a minimum of three reference ties to durable physical objects, relevant monuments and physical conditions that will enable recovery of the corner.)



NW Corner, NW 1/4 of the NE 1/4, Section 32

Date of Survey: 8/18/17

NOTE: ALL TIES TO BRASS DISK OR YELLOW/ORANGE SURVEY MARKER UNLESS NOTED.



I hereby certify that this land surveying document was prepared and the related survey work was performed by me or under my direct personal supervision and that I am a duly Licensed Land Surveyor under the laws of the state of Iowa.

Signature: J. Brian Morrissey Date: 12/26/17
J. Brian Morrissey

License number 7995.

My license renewal date is December 31, 2019

927-17-2/5

PL \$700 ck - Ret Brian Morrissey

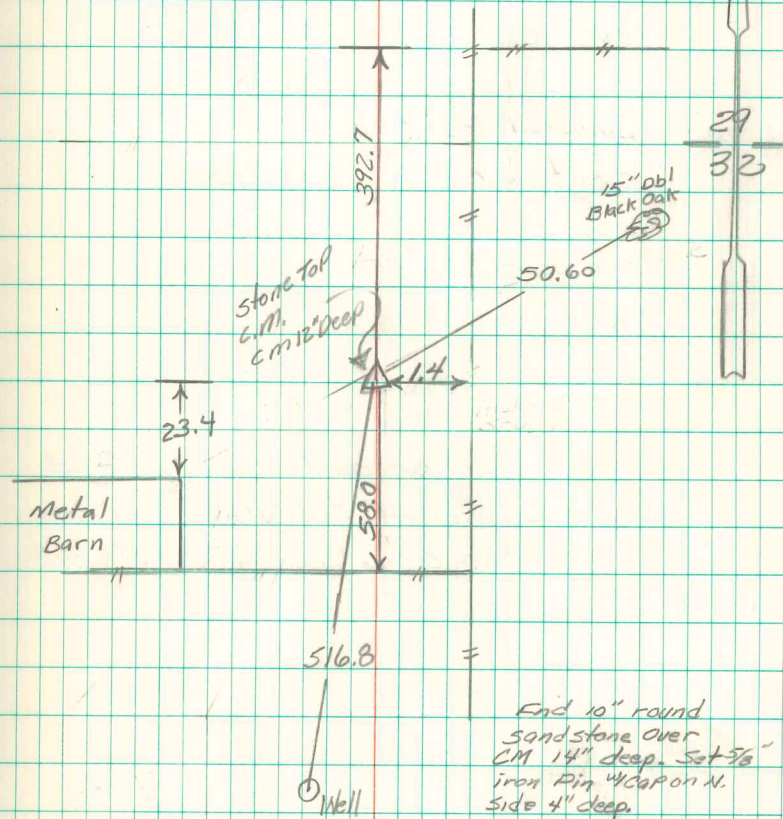
Found 10" Round sand stone over
2-2" D Tile

Lowered 1-2" D Tile in Place
& set C.M. sandstone on top
C.M. 12" Deep

N $\frac{1}{4}$ Cor 32-75-19

Set - 6-24-40

Notes - Wignall



End 10" round
sandstone over
CM 14" deep. Set 5/6"
iron pin 1/4" cap on N.
side 4" deep.

Abie Davis 3/5/96