

Found 4'x12"x24" sandstone  
#2-2" D Tile

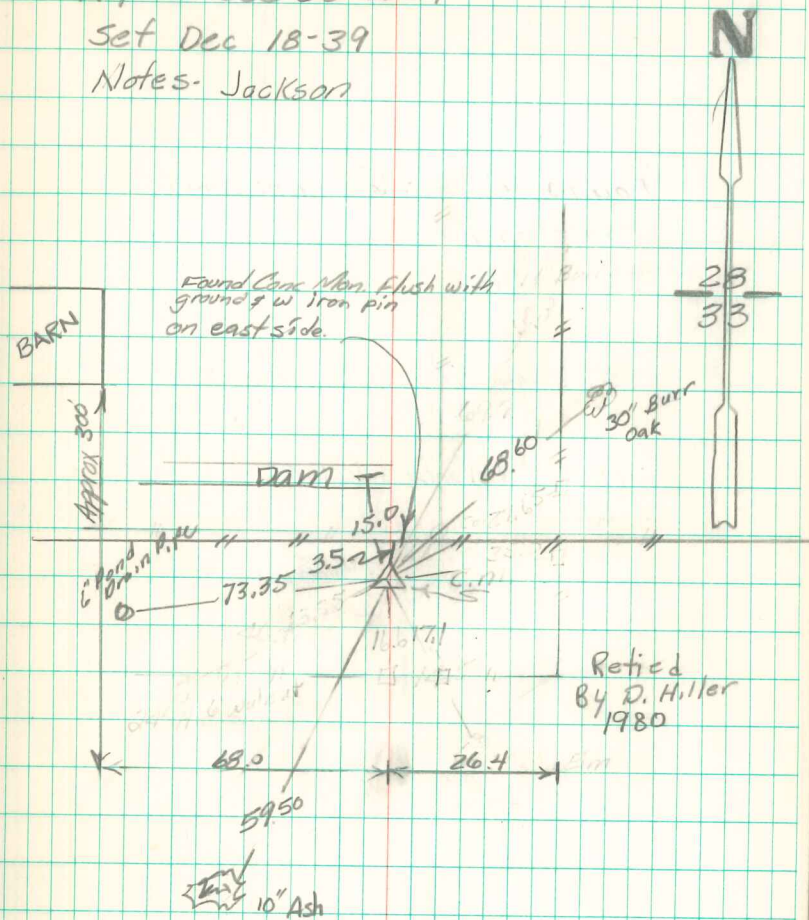
set c.m. Tile under c.m.

stone on south side c.m.

N $\frac{1}{4}$  Cor Sec 33-75-19

Set Dec 18-39

Notes- Jackson



Retied  
By D. Hiller  
1980

Retied 7/31/97  
Abe Davis