

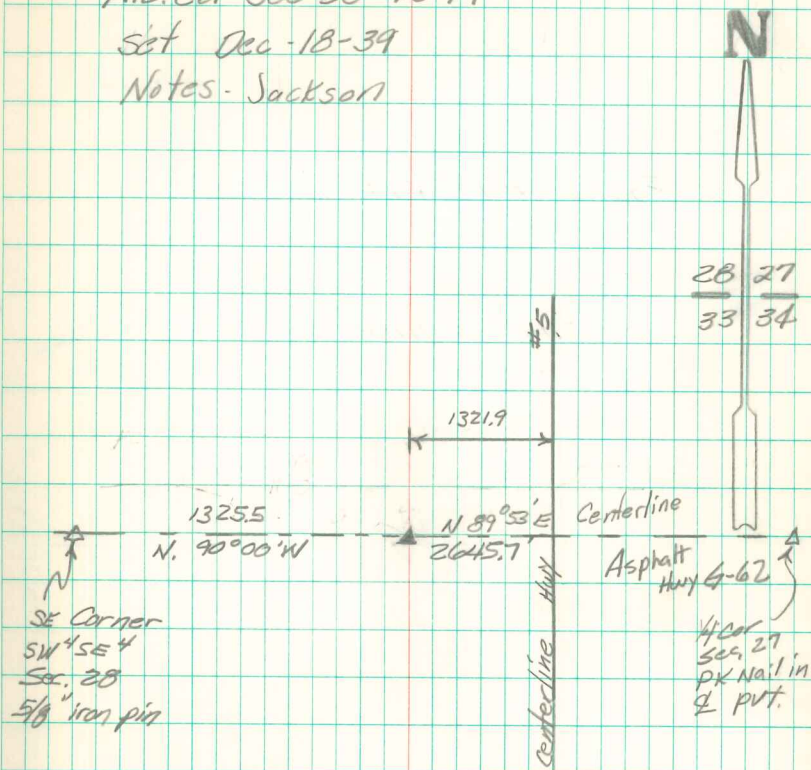
Found 2-2" D tile

Set c.m. on E. side tile
Left tile in place

N.E. Cor sec 33-75-19

Set Dec-18-39

Notes - Jackson



Found 22" at bottom end of Core.

Mon. laying tilted northward 4-30" deep. Set
up right from position of the base. Top of
broken CM is now 10" deep. Set 1 1/2" pipe on
W side, 3/4" iron bar on E side, + 5/8" iron Pin on
S side of cap. Left small magnet on top of CM.

Abie Davis 7/31/97