

Found Sandstone 14"x14"x12"
over 2-2" D tile Both tile Broken

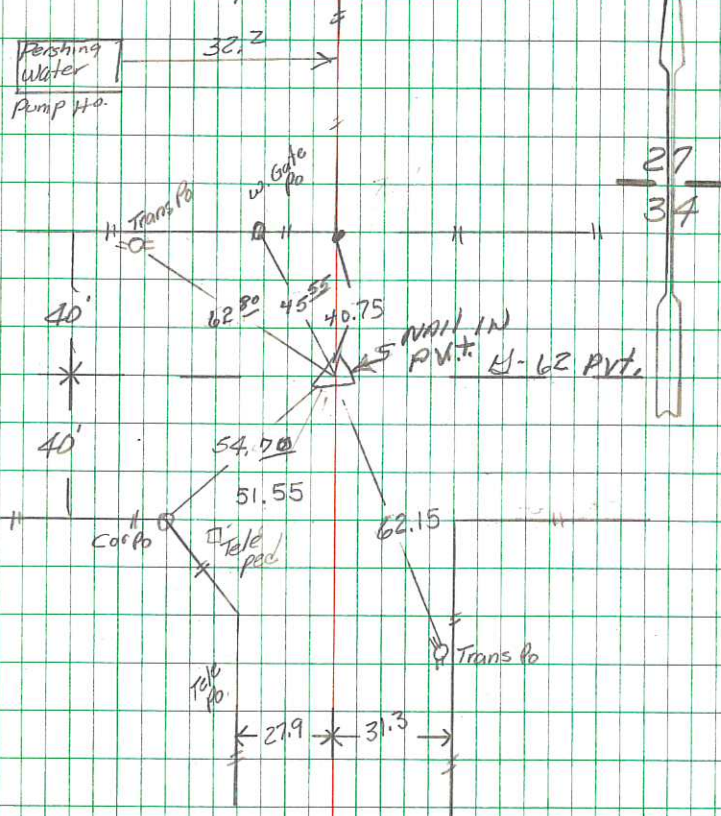
Lowered tile in its orig. upright
Pos. & set c.m.

c.m. 20" Deep
stone top c.m.

N $\frac{1}{4}$ Cor 34-75-19

Set 6-12-41

Notes: Wignall



RETIRED 10/25/93

Abie DAULS

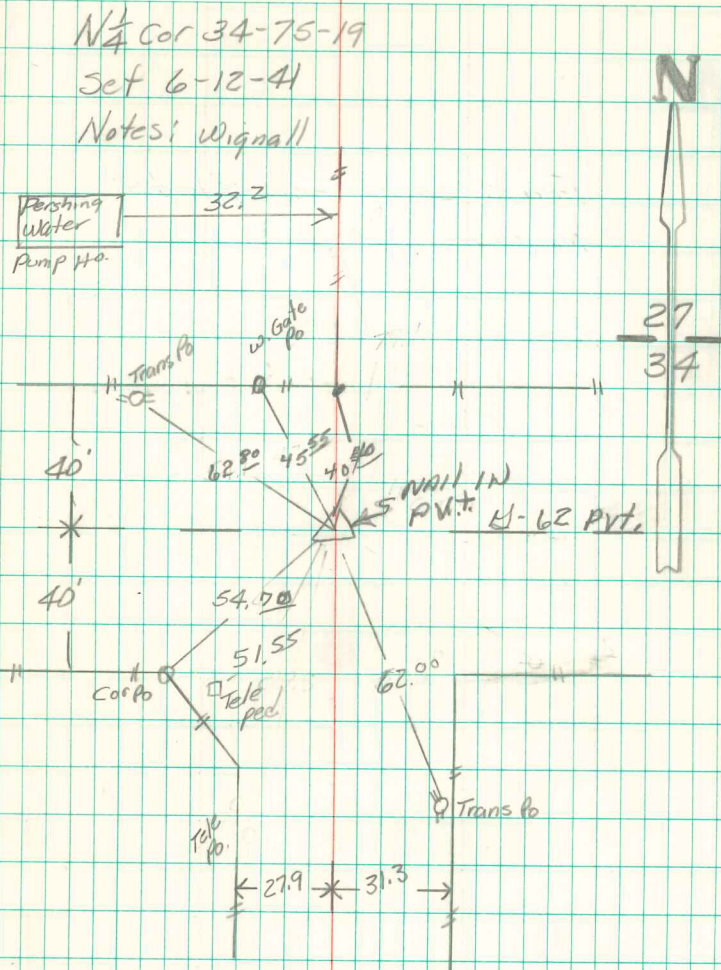
11/14/01

HATCH & VANDER WERT
6/30/2016

Found Sandstone 14" x 14" x 12"
over 2-2" D tile Both tile Broken

Lowered tile in its orig. upright
Pos. & set c.m.

c.m. 20" Deep
stone Top c.m.



RETRIED 10/25/93

ABLE DAUIS

11/14/01