

**INDEX LEGEND**

COUNTY: MARION  
SECTION: 36, T-75N, R-19W  
CORNER: W 1/4 Corner

SURVEYOR & SURVEY COMPANY:  
Jason S. Lowry, P.L.S.  
Lowry Land Services, L.L.C.  
752 Diamond Trail Rd., Searsboro, Iowa 50242

PREPARED BY AND RETURN TO:  
Jason S. Lowry, P.L.S.  
752 Diamond Trail Rd., Searsboro, Iowa 50242  
(641) 521-1160, lowrylandservices@gmail.com

Instr. Number: 23-3444  
BK: 2023 PG: 3444  
Recorded: 8/21/2023 at 9:41:40.0 AM  
County Recording Fee: \$7.00  
Iowa E-Filing Fee: \$3.00  
Combined Fee: \$10.00  
Revenue Tax:  
NAOMI ELLIS, RECORDER  
Marion County, Iowa

**UNITED STATES PUBLIC LAND SURVEY CORNER CERTIFICATE**  
Land Survey Monument situated in Section 36, Township 75 North, Range 19 West of the Fifth Principal Meridian, Marion County, Iowa. Not previously recorded.

**MONUMENT DESCRIPTION & REMARKS**

W 1/4 Corner - Found 4" x 4" WPA concrete monument using Marion County Engineer's ties. No certificate of record.

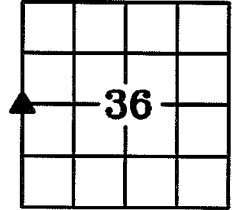
This corner was used for a plat of survey in the W 1/2 of Section 36.



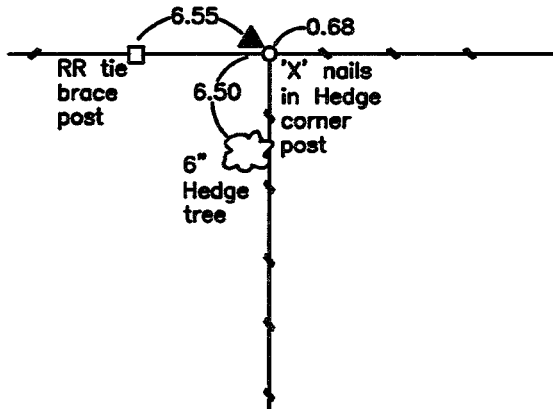
**PLAN VIEW**

No Scale

**W 1/4 Corner**  
**Section 36**



Found 4" x 4" WPA concrete monument.



NOTE: ALL TIES ARE PLUMB MEASUREMENTS TO ORANGE SURVEY MARKER UNLESS NOTED.



I hereby certify that this land surveying document was prepared and the related survey work was performed by me or under my direct personal supervision and that I am a duly Licensed Land Surveyor under the laws of the State of Iowa.

My license renewal date is 12/31/2023

Pages covered by this seal: 1 - 1

*Jason S. Lowry*  
Jason S. Lowry

Iowa Lic. No. 22291

08/09/2023

Date

**LEGEND**

- ▲ Section Corner Found
- △ Section Corner Set
- Existing Fence

**LAND CORNER TO BE INDEXED**

Land Corner	Section	Township	Range
W 1/4 Cor.	36	75	19

LOWRY LAND SERVICES, L.L.C.

752 DIAMOND TRAIL RD., SEARSBORO, IOWA 50242, 641-521-1160

PROJ. NO. 5923

DATE OF SURVEY: 08/07/23

CERT NO. 1/3

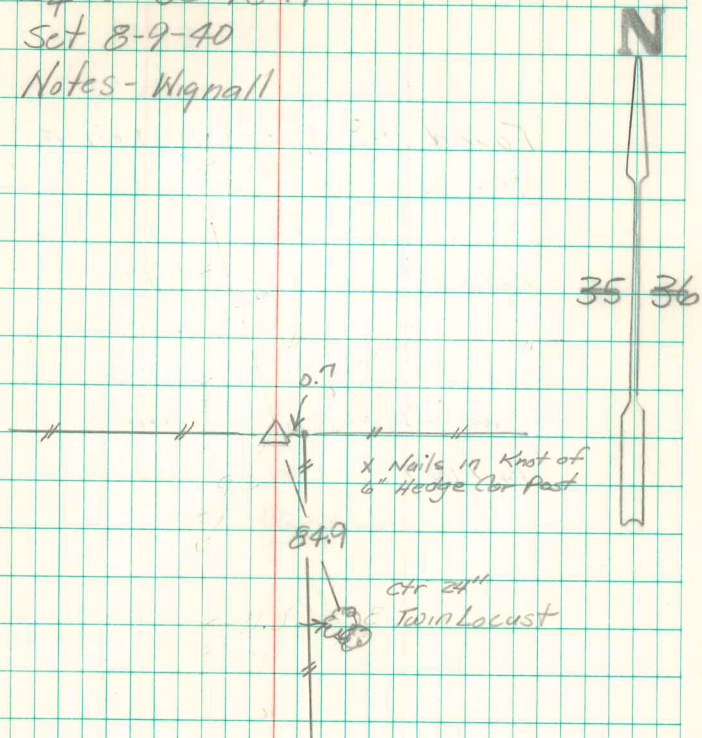
Found Field boulder 9" x 6" x 5"  
over 2-2" tile on END

Lowered 1-2" tile in Place  
& set c.m.

stone on top c.m. Point above  
surface

Found Conc. Mon. on West side of Post  
Top 12" broken off, Dug to base of CM  
& Reset top CM 6" Deep with 34" x 24"  
pipe on East side.

Eq Cor 35-75-19  
Set 8-9-40  
Notes - Wignall



Garden Eng.  
Dec 8, 1986