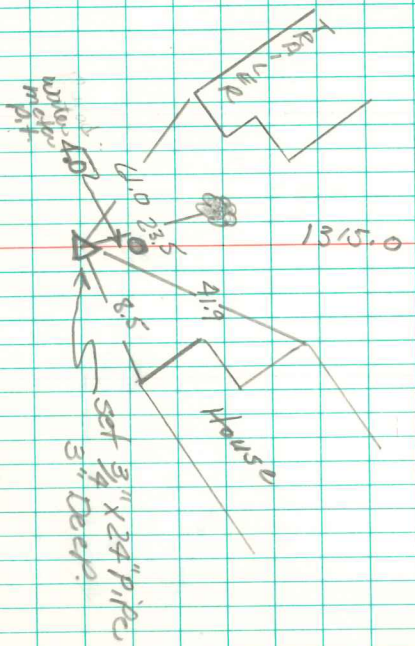


N.W. Cor. SW. SW. Sec 2-75-19

Δ W 1/4 Cor 2-75-19



Established July 21, 83, in line between
 Sec Cor $\frac{3}{16}$ + $\frac{1}{4}$ Cor $\frac{3}{2}$. 1325.7 North from
 the Sec. Cor as per County Road Plans 1934
 Meas. 1315.0 North to $\frac{1}{4}$ Cor $\frac{3}{2}$. 84

Gardner V ASSOC.
 05/15/2005a F.v.

Δ S.W. Cor
 2-75-19

1325.7