



GARDEN & ASSOC.

P.O. Box 451, Oskaloosa, Iowa 52577-0451 Phone: (641)672-2526

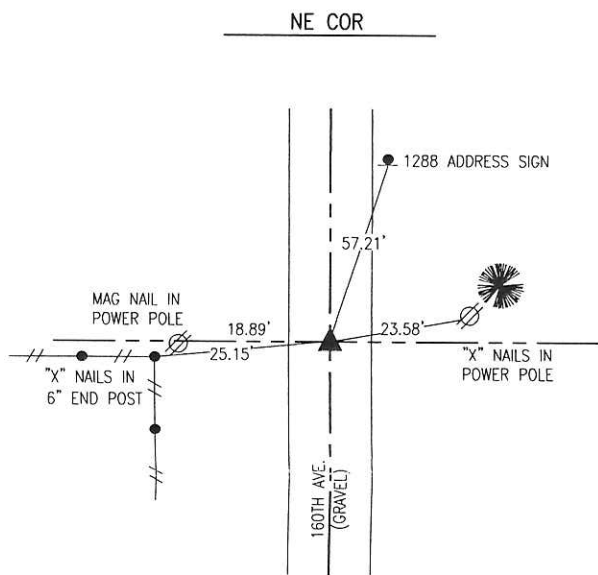
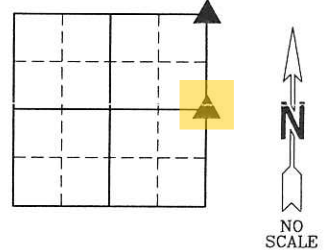
KAREN SCHWANEBECK, RECORDER
MARION COUNTY IOWA

UNITED STATES PUBLIC LAND SURVEY CORNER CERTIFICATE

OF

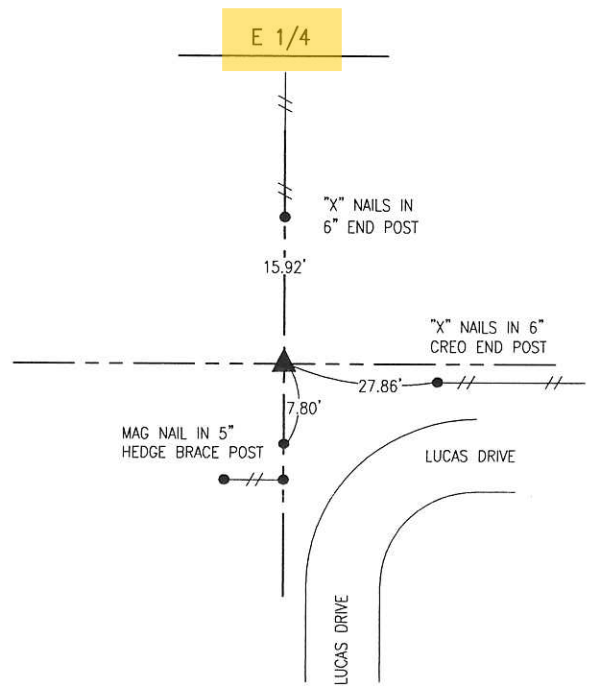
Land Survey Monuments situated in Section 4, Township 75, Range 19, of the Fifth Principal Meridian, MARION County, Iowa. Previously recorded in SEE BELOW in County Recorder's Office.

Monument Description and Remarks: SEE BELOW



MAY 1998
LS 5594 FOUND A WOOD HUB AND CAPPED IRON PIN OVER CONCRETE MONUMENT AS DESCRIBED IN THE CORNER CERTIFICATE RECORDED IN BOOK 1 ON PAGE 408.

DEC. 2020
FOUND 5/8" REBAR WITH ILLEGIBLE YELLOW CAP 8" DEEP. THIS CORNER CERTIFICATE IS BEING PREPARED BECAUSE FEWER THAN 3 TIES WERE REMAINING FROM THE CORNER CERTIFICATE RECORDED IN BOOK 1 ON PAGE 408.



MAY 1998
LS 5594 FOUND A CONCRETE MONUMENT WITH 3/4" IRON PIN AND 9" X 9" CONC BLOCK ABOVE ACCORDING TO THE CORNER CERTIFICATE RECORDED IN BOOK 1 ON PAGE 407.

JULY 2020
LS 5594 RETIED SAME CORNER AND SET 5/8" PIN WITH CAP 5594 ON WEST SIDE OF MONUMENT AND PLACED A 10" X 10" X 10" CONC. BLOCK ON TOP OF MONUMENT. SEE CORNER CERTIFICATE IN BOOK 2 PAGE 156.

DECEMBER 2020
FOUND CONCRETE MONUMENT 15" DEEP WITH 3/4" REBAR ON SOUTHWEST SIDE AND 10" X 10" CONCRETE BLOCK ABOVE. REMOVED CONCRETE BLOCK TO AVOID FUTURE SURVEYORS CONFUSING IT FOR A STONE AND RE-TIED THE CORNER.

I hereby certify that this land surveying document was prepared and the related survey work was performed by me or under my direct personal supervision and that I am a duly licensed Professional Land Surveyor under the laws of the State of Iowa.

Bobby J. Maddaleno 1-7-21
Bobby J. Maddaleno, P.L.S. Date
License number: 19960
My license renewal date is December 31, 2021

SEAL



List Corners to be Indexed			
Corners	Section	Township	Range
NE COR	04	75	19
E 1/4 COR	04	75	19

Pd #700 CK-Res G&A Env.

Found Lime stone Rock $12\frac{1}{2} \times 5 \times 4$ "
over 2-2" Horse shoe Tile

set C.M. over 1-2" Horse shoe Tile
Lowered in Place.

Put the stone over Top C.M.

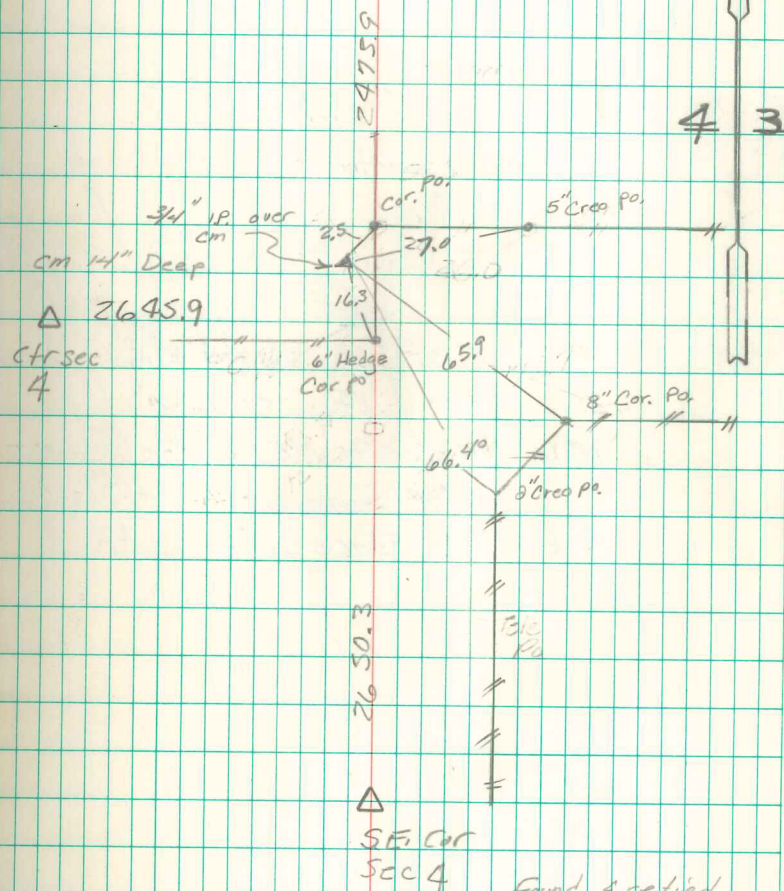
set Conc. Post over Tile For
Witness 12.6' East in ctr of old
Witness Stump.

E. $\frac{1}{4}$ Cor sec 4-75-19

Set: July 15-1941

Notes: Kennedy - Wells, Burris & Ford

Δ N.E. Cor
Sec 4



Found & retied
7/23/89 by Abie Davis
5/6/98 Abie
11/2/00 Abie