



Document 22-553

Book 2022 Page 553 Type CORNR Pages 1  
Date 1/28/2022 Time 12:54 PM  
Rec Amt \$7.00



GARDEN & ASSOC.

P.O. Box 451, Oskaloosa, Iowa 52577-0451 Phone: (641)672-2526

KAREN SCHWANEBECK, RECORDER  
MARION COUNTY IOWA

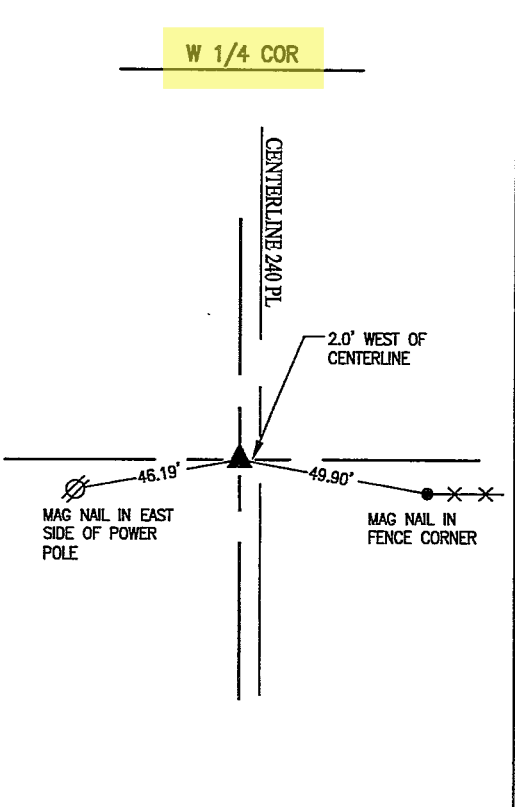
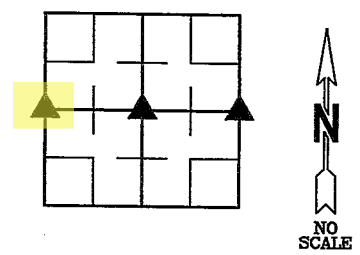
UNITED STATES PUBLIC LAND SURVEY CORNER CERTIFICATE

OF

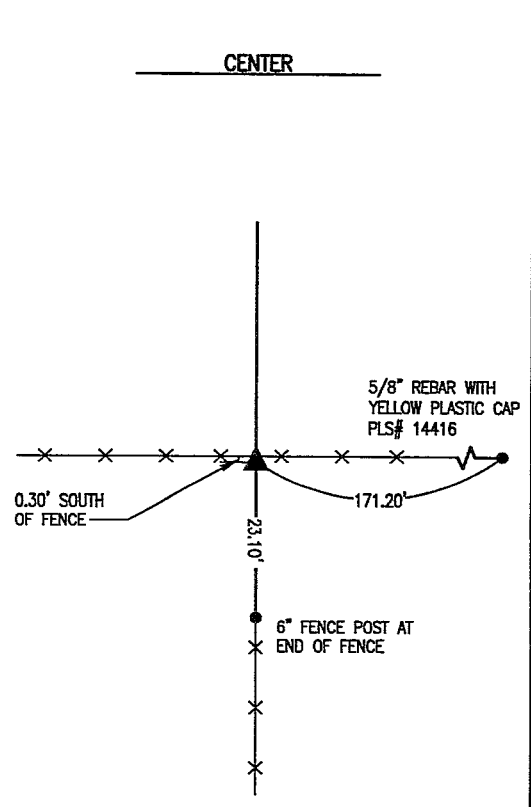
Land Survey Monuments situated in Section 12, Township 76, Range 18, of the Fifth Principal Meridian, MARION County, Iowa. Previously recorded in SEE BELOW in County Recorder's Office.

Monument Description and Remarks:

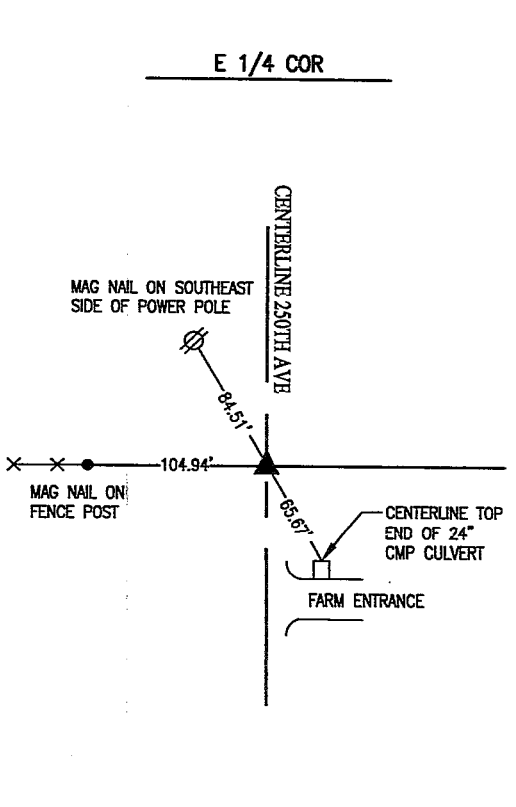
CENTER OF SECTION 12 WAS PREVIOUSLY RECORDED IN BOOK 2012 PAGE 2770.



DECEMBER 10, 2021  
FOUND CONCRETE NAIL IN PAVING  
COUNTY RECORDS INDICATE CONCRETE NAIL WAS SET ABOVE WPA CONCRETE MONUMENT BY MARION COUNTY ENGINEER DURING ROAD PAVING PROJECT.



DECEMBER 10, 2021  
FOUND 5/8" X 30" REBAR WITH YELLOW PLASTIC CAP PLS# 14416.  
APRIL 28, 2012  
SEARCHED THOROUGHLY AROUND OLD FENCE CORNER FOR POSSIBLE STONE BUT NOTHING. SET 5/8" X 30" REBAR ON NORTH SIDE OF BASE OF OLD CORNER POST.

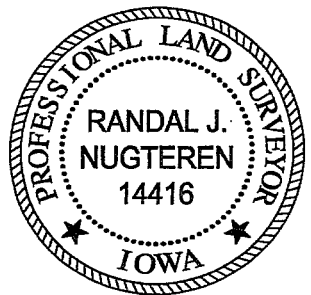


DECEMBER 10, 2021  
SET MAG NAIL IN CENTERLINE JOINT AT LOCATION SHOWN ON SURVEY IN BOOK 2012 PAGE 3330.

I hereby certify that this land surveying document was prepared and the related survey work was performed by me or under my direct personal supervision and that I am a duly licensed Professional Land Surveyor under the laws of the State of Iowa.

*Randal J. Nugteren* January 21, 2022  
Randal J. Nugteren, P.L.S. Date  
License number: 14416  
My license renewal date is December 31, 2022

SEAL



List Corners to be Indexed			
Corners	Section	Township	Range
W 1/4 COR	12	76	18
CENTER	12	76	18
E 1/4 CPR	12	76	18

P.L.S. CHECK - Ret Garden & Assoc. Env.

