



GARDEN & ASSOC.

P.O. Box 451, Oskaloosa, Iowa 52577-0451 Phone: (641)672-2526

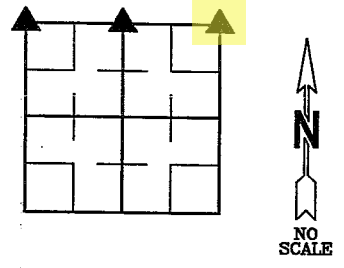
KAREN SCHWANEBECK, RECORDER
MARION COUNTY IOWA

UNITED STATES PUBLIC LAND SURVEY CORNER CERTIFICATE

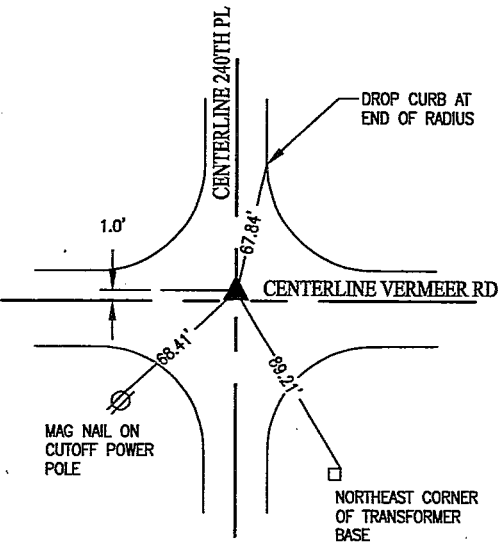
OF

Land Survey Monuments situated in Section 12, Township 76, Range 18, of the Fifth Principal Meridian, MARION County, Iowa. Previously recorded in SEE BELOW in County Recorder's Office.

Monument Description and Remarks:
NW CORNER PREVIOUSLY RECORDED IN BOOK 2016 PAGE 1129.
NE CORNER PREVIOUSLY RECORDED IN BOOK 1 PAGE 426.



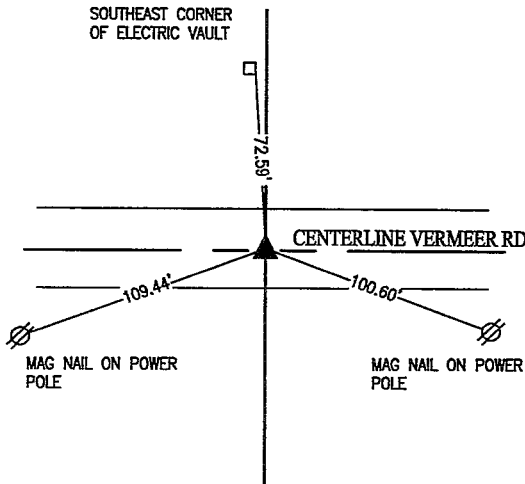
NW COR



DECEMBER 10, 2021
FOUND BROKEN CONCRETE NAIL 0.3' EAST OF 240TH PL CENTERLINE AND 1.0' NORTH OF VERMEER RD CENTERLINE.

COUNTY RECORDS INDICATE CONCRETE NAIL WAS SET ABOVE WPA CONCRETE MONUMENT BY MARION COUNTY ENGINEER DURING ROAD PAVING PROJECT.

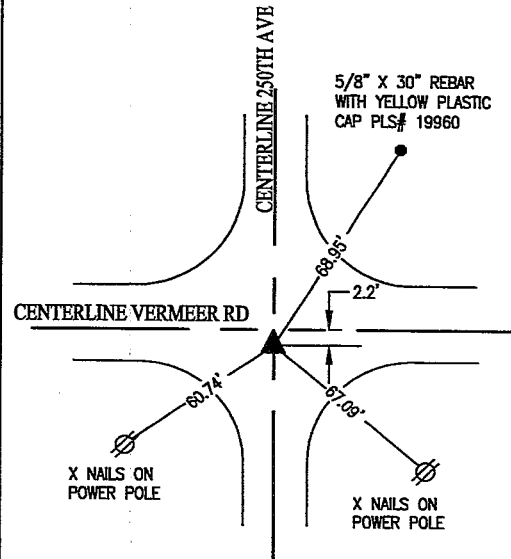
N 1/4 COR



DECEMBER 10, 2021
SET MAG NAIL 0.1' SOUTH OF CENTERLINE VERMEER RD AT LOCATION OF CONCRETE NAIL IN CUT X FOUND IN 2005.

COUNTY RECORDS INDICATE CONCRETE NAIL WAS SET ABOVE WPA CONCRETE MONUMENT BY MARION COUNTY ENGINEER DURING ROAD PAVING PROJECT.

NE COR



DECEMBER 10, 2021
FOUND 1/2\"/>

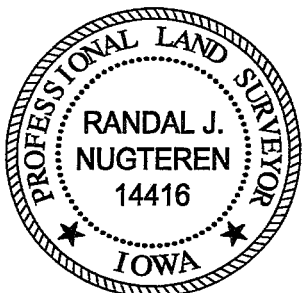
INTERSECTION HAS BEEN RECONSTRUCTED SINCE TIES NOTED IN BOOK 1 PAGE 426.

COUNTY RECORDS INDICATE CONCRETE NAIL WAS SET ABOVE WPA CONCRETE MONUMENT BY MARION COUNTY ENGINEER DURING ROAD PAVING PROJECT.

I hereby certify that this land surveying document was prepared and the related survey work was performed by me or under my direct personal supervision and that I am a duly licensed Professional Land Surveyor under the laws of the State of Iowa.

Randal J. Nugteren January 21, 2022
Randal J. Nugteren, P.L.S. Date
License number: 14416
My license renewal date is December 31, 2022

SEAL



List Corners to be Indexed			
Corners	Section	Township	Range
NW COR	12	76	18
N 1/4 COR	12	76	18
NE COR	12	76	18

RD# 726 CK - Ret Garden & Assoc. Env.

Found Gas Pipe $\frac{1}{2}$ " x 26" Long

set c.m. Put Gallon of Gravel
at base.

N.E. Cor sec 12-76-18

Set: 11-13-39

Notes: Wignall

