

KAREN SCHWANEBECK, RECORDER
 MARION COUNTY IOWA

Prepared By: Eric M. Green, PLS, Veenstra & Kimm, Inc., 3000 Westown Parkway, West Des Moines, IA, 50266; (515) 225-8000

UNITED STATES PUBLIC LAND SURVEY CORNER CERTIFICATE

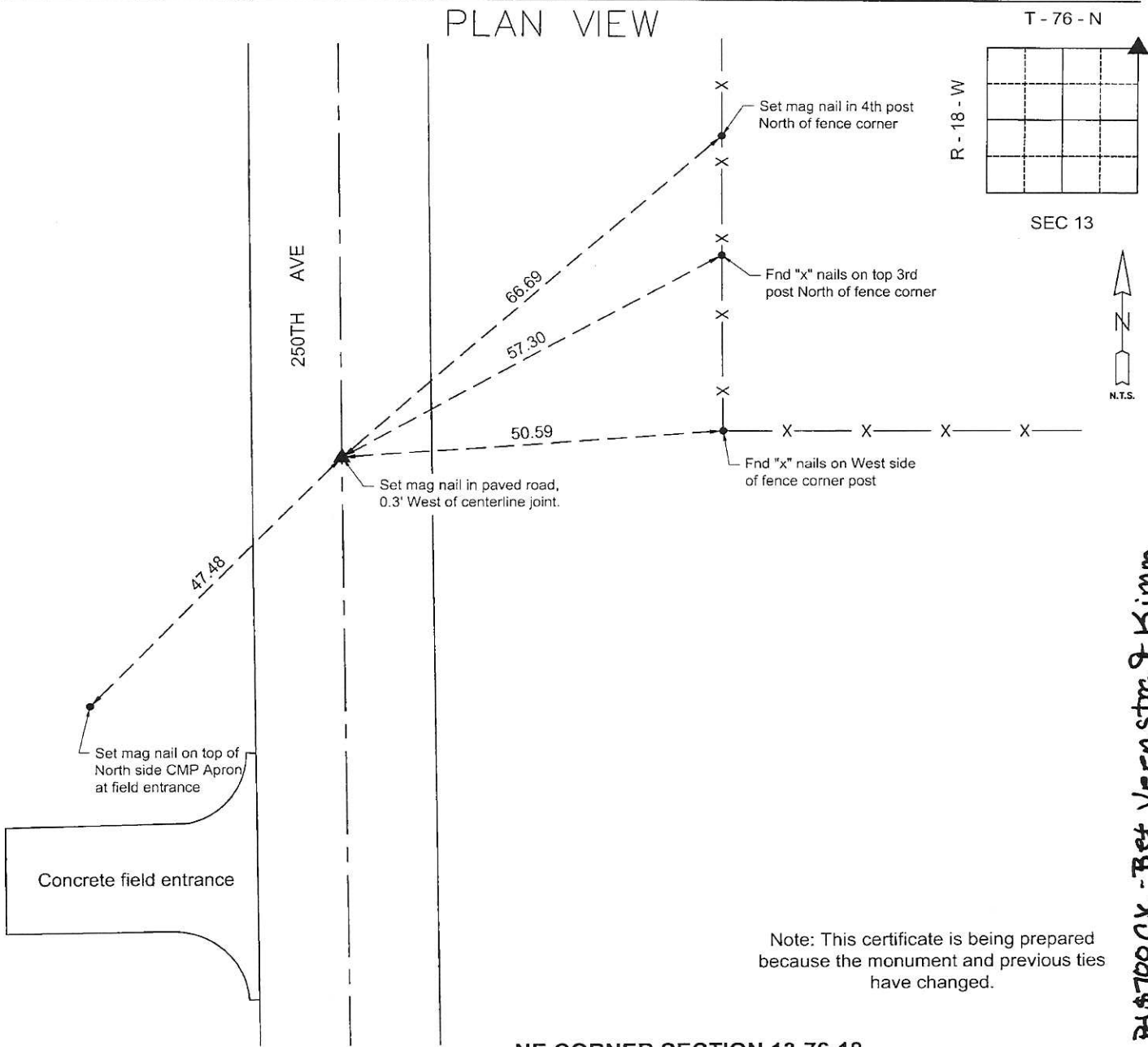
of

LAND SURVEY MONUMENTS SITUATED IN SECTION 13, TOWNSHIP 76 N, RANGE 18 W, of the Fifth Principal Meridian, Marion County, Iowa.

Monument Description & Remarks:

NE Corner Section 13-76-18 - Based on previous ties and surveys, a PK Nail or a Concrete Nail monumented this corner. Using ties and field survey data, a search was made at the corner location. No PK Nail or Concrete Nail was found. The paving was broken and missing in this area. Using surveys for Parcel "C" of Sections 12 & 13 (Bk. 2000 Pg. 7106) and Parcel "D" of Section 12 (Bk. 2012 Pg. 3330), the corner location was determined. Using found monuments from Parcel "C" and a call to the centerline joint from Parcel "D", a Mag Nail was set at this corner location by running the North line of Section 13 from the West, 0.3 feet West of the centerline joint of 250th Avenue.

PLAN VIEW




Note: This certificate is being prepared because the monument and previous ties have changed.

NE CORNER SECTION 13-76-18

#181151

I hereby certify that this land surveying document was prepared and the related survey work was performed by me or under my direct personal supervision and that I am a duly licensed Land Surveyor under the laws of the State of Iowa.

Signed:  Date: 3/12/2020



Eric M. Green, P.L.S.
 Iowa License No. 17758
 My license renewal date is December 31, 2021
 Drawings covered by this seal: This Sheet Only

CORNERS TO BE INDEXED:

CORNER	SECTION	TWP	RANGE
SE CORNER (MARION COUNTY)	12	T76N	R18W
NE CORNER (MARION COUNTY)	13	T76N	R18W
SW CORNER (MAHASKA COUNTY)	7	T76N	R17W
NW CORNER (MAHASKA COUNTY)	18	T76N	R17W

RD 700CK - Bet Veenstra & Kimm

Found Cement block 10"x5"x5"
1- brick & 1/4" Rod 15" Long

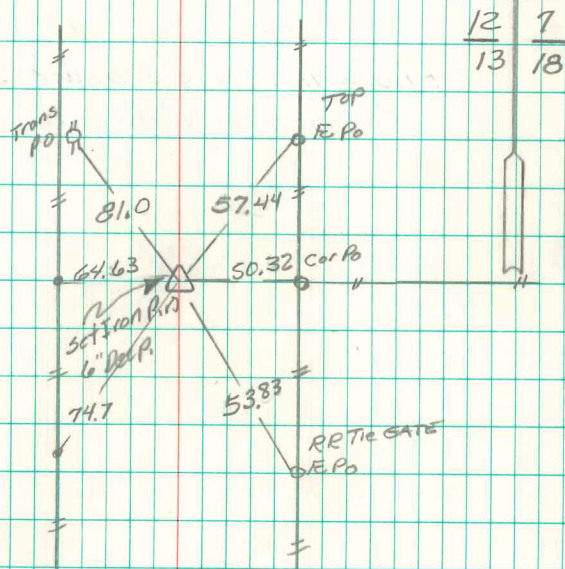
Set Concrete Mon. & Placed original
evidence on N. side of C.M.

N.E. Cor Sec 13-76-18

2

Set: 11-10-39

Notes: Kennedy - Ogden, Luther
& Frazier



C.M. 18" Deep set 1" Iron Pipe Top C.M.
6" Deep

Retied April - 5-72

AND 10/6/92

Road paved in June of 1995

Set Conc. Nail