

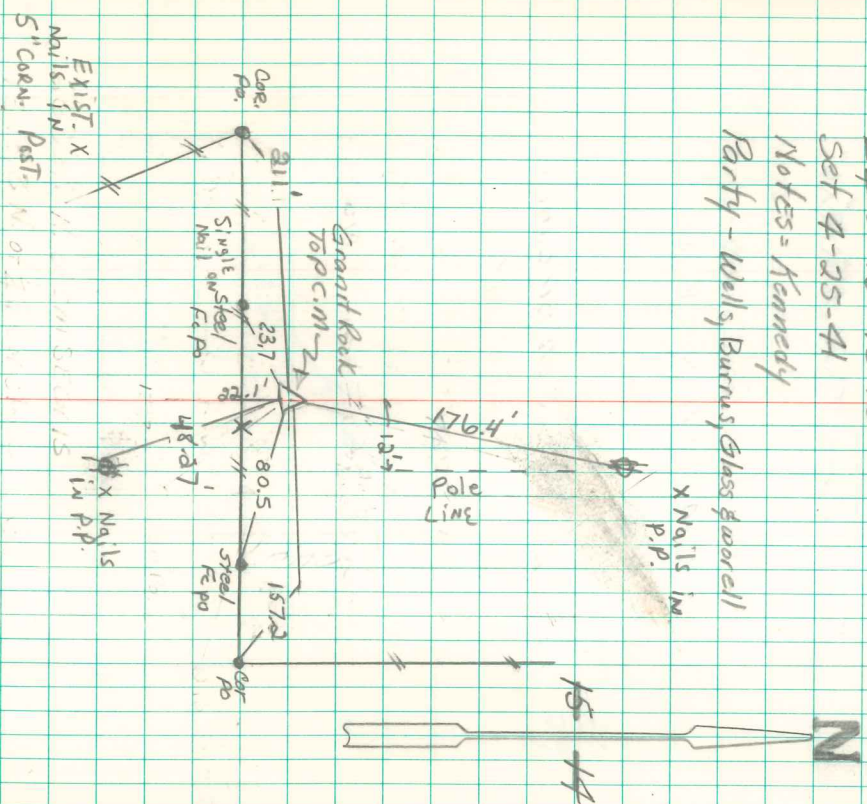
Reestablished at mid point on line set mon. Put Grant Rock 20"x12"x6" on top c.m.

Dug hole 10'x20'x2' deep at point indicated by line & measurements.

Found no evidence, except 6"x12"x20" Grant Pointed Rock laying in the line near corner, evidently had been moved.

Aug. 4-1994 Found 6" x 12" x 20" GRANITE Exposed over WPA. CONC. MON. 20" Deep by Idiot Ties. 2" x 2" Angle Iron Beside CONC. MON. SET 3/4" x 15" Rebar on EAST SIDE OF STONE.

Excor 15-76-18
Set 4-25-41
Notes = Kennedy
Party - Wells, Burns, Glass & Powell



Retied 8-26-94 by J. Sandy Nungtown