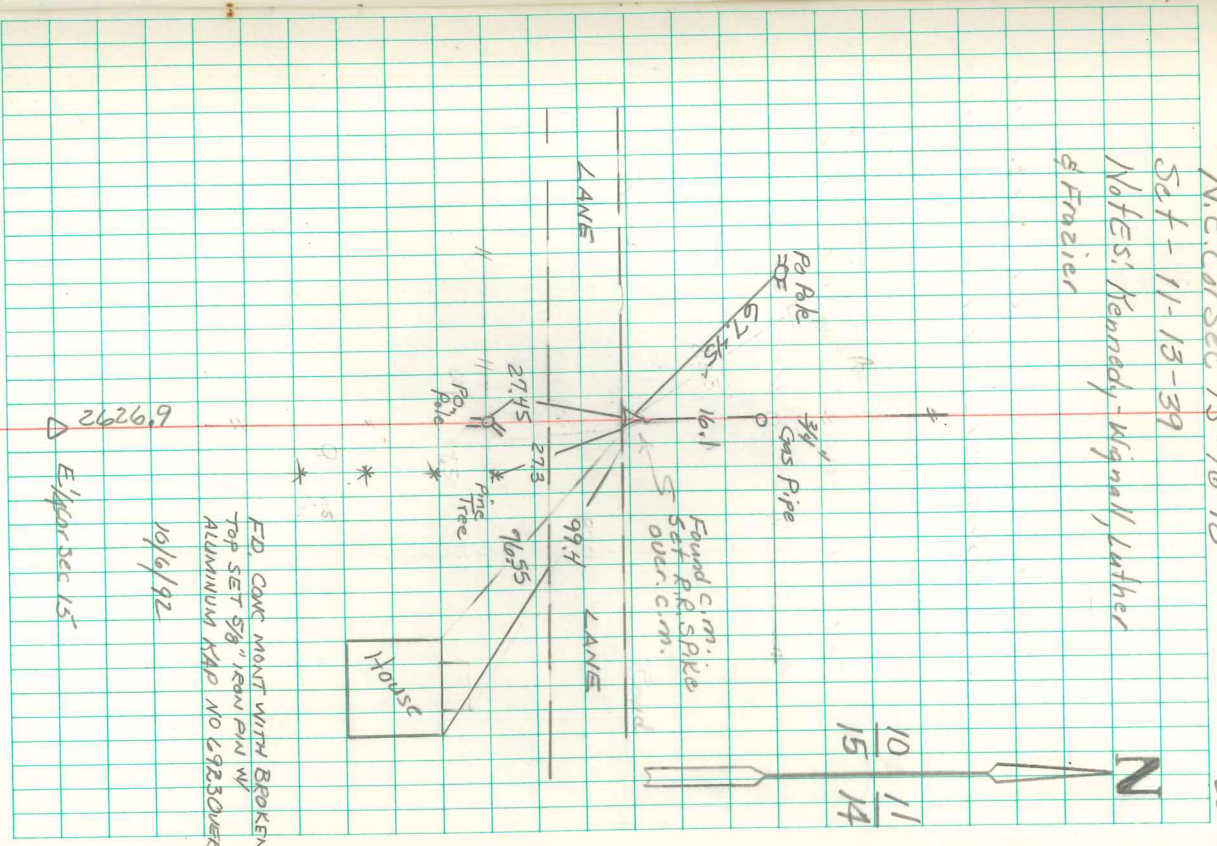


Found original Post in mound,
 12" below ground surface, by D.L. Thomas
 also Found 10"x6"x5" Limestone over
 Post.
 Loaded Pieces of Limestone in Place
 & set C.M. over it, Limestone on
 North side of C.M.

N.E. Cor Sec 15-76-18
 Set - 11-13-39
 No Fesl, Kennedy, Wignall, Luther
 & Frazier



2626.9
 E. of Sec 15

FD CONG MOUNT WITH BROKEN
 TOP SET 5/8" RAIL PIN W/
 ALUMINUM KAP NO 69230 OVER
 10/6/92

21-11-75 m... c