

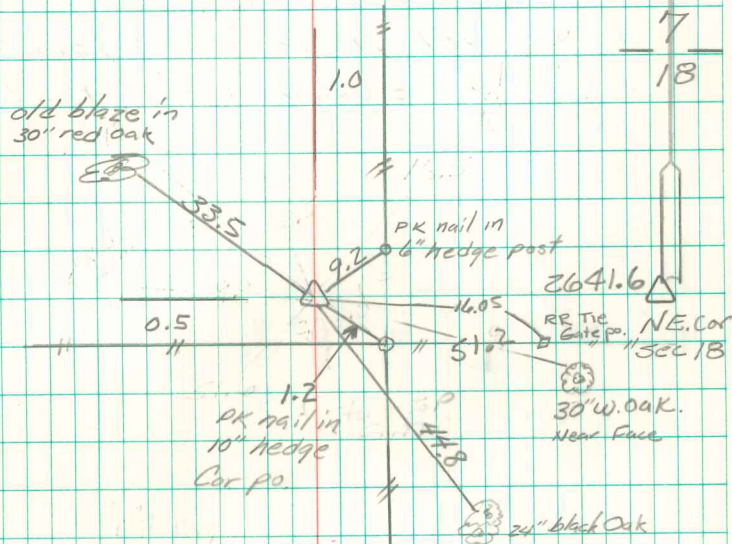
Found 1-2" Round Tile and
Limestone 16"x8"x2".

set C.M. on top of 1-2" round tile
& set Limestone on top of C.M.

N $\frac{1}{4}$ Cor Sec. 18-76-18

Set - 1-29-41

Notes: Mandell-Frazier, Ogden,
Elsberry, Barker.



Set Limestone on N side of CM
Set $\frac{5}{8}$ " x 30" rebar on N side
of CM Dec 11, 1992