

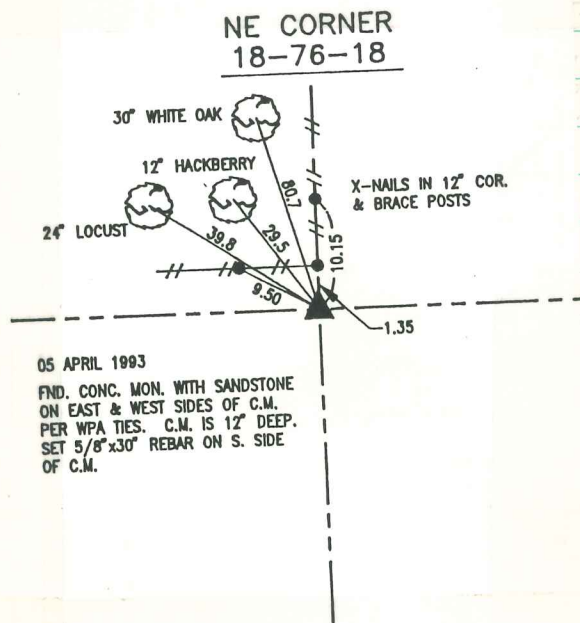
Found 2 sandstones 1-6"x10"x16"
1-2"x8"x10".

Set C.M. & Placed stones on
E. & W. sides of C.M.

N.E. Cor sec 18-76-18

Set: Dec. 7-1939

Notes: Thomas - Jackson



05 APRIL 1993

FND. CONC. MON. WITH SANDSTONE
ON EAST & WEST SIDES OF C.M.
PER WPA TIES. C.M. IS 12" DEEP.
SET 5/8"x30" REBAR ON S. SIDE
OF C.M.

RETIRED 20 APRIL 1993

LEROY NUGTREN