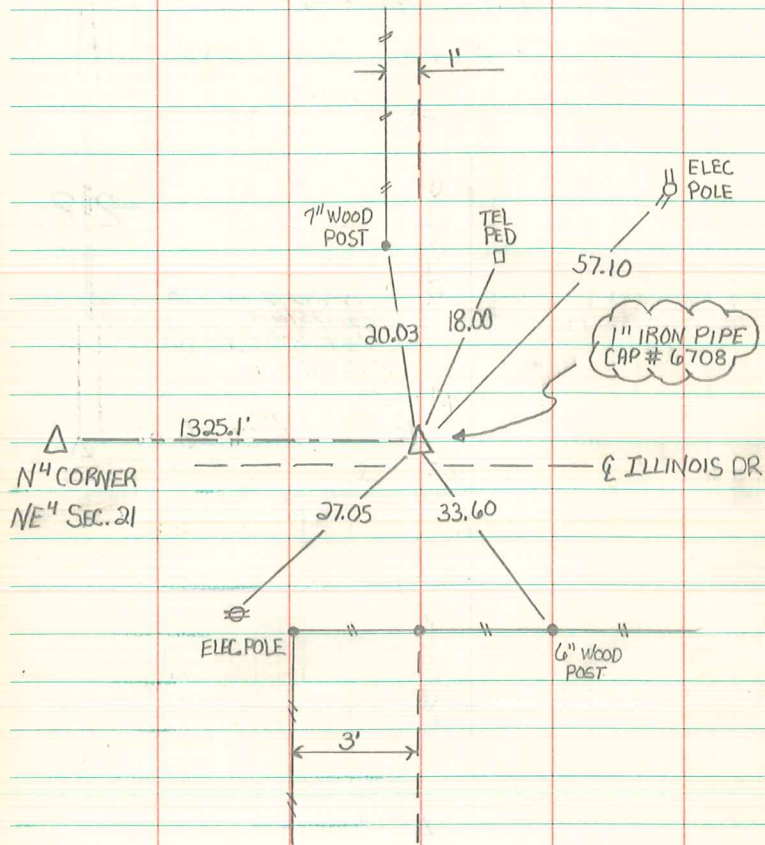


NE CORNER SECTION 21-76-18

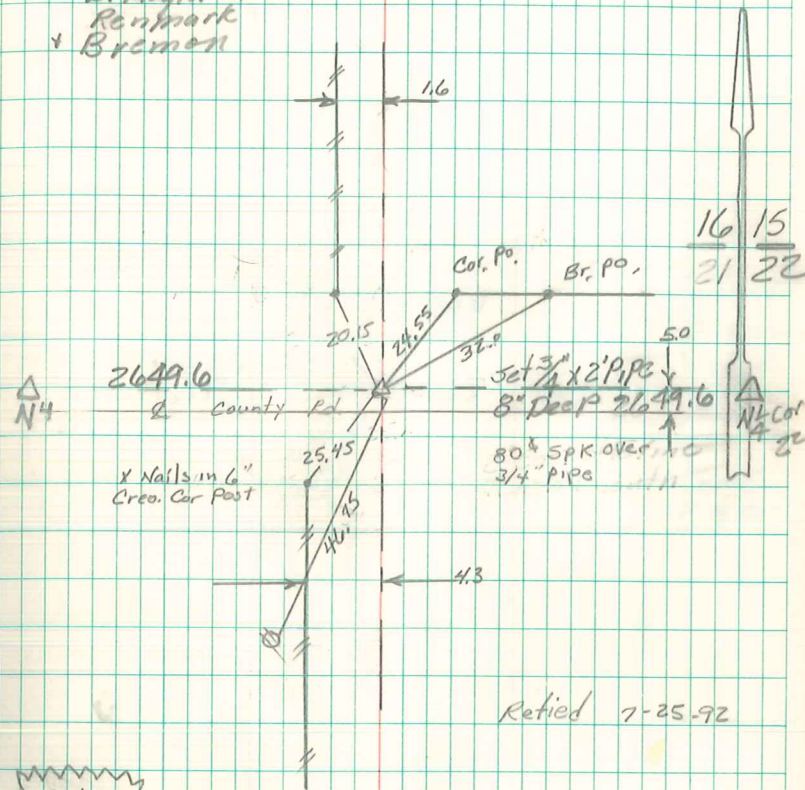


RE-TIED 12/17/12  
ABIE C. DAYS

N.E. Cor Sec 21-76-18

Restablished Corner From Section  
Corners Found 1/2 mile in All Directions  
By Garden Eng. - Nov. 14-1978

L. Nugteren  
Remark  
Bremen



Retied 7-25-92

NEW TIE