



Document 23-1028

Book 2023 Page 1028 Type CORNR Pages 1

Date 3/17/2023 Time 11:18 AM

Rec Amt \$7.00



GARDEN & ASSOC.

P.O. Box 451, Oskaloosa, Iowa 52577-0451 Phone: (641)672-2526

NAOMI ELLIS, RECORDER

MARION COUNTY IOWA

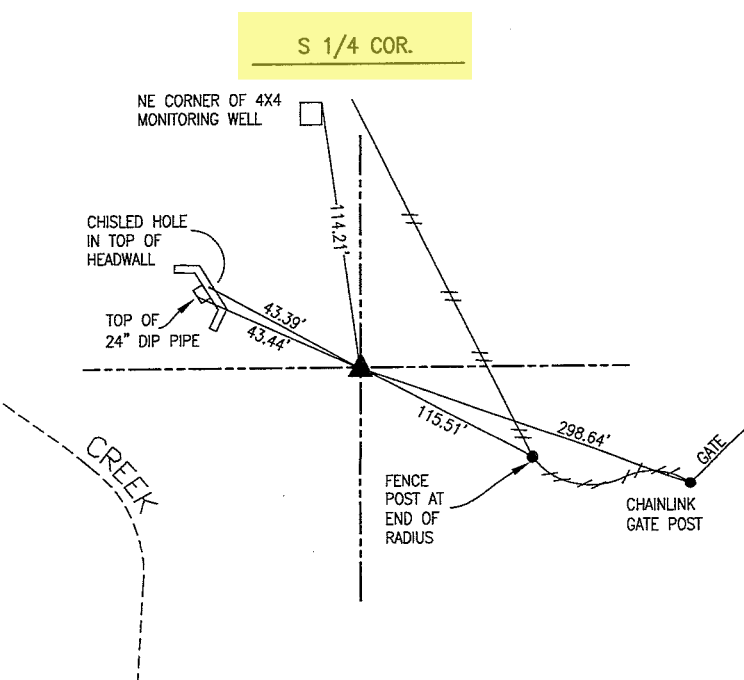
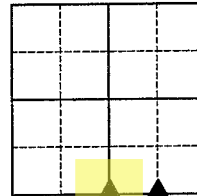
UNITED STATES PUBLIC LAND SURVEY CORNER CERTIFICATE

OF

Land Survey Monuments situated in Section 15, Township 76, Range 18, of the Fifth Principal Meridian, MARION County, Iowa.

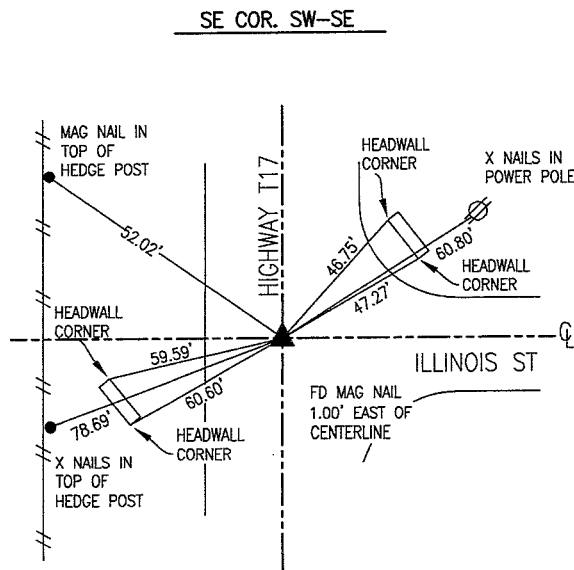
Previously recorded in NO CERTIFICATE OF RECORD in County Recorder's Office.

Monument Description and Remarks: SEE BELOW



FEBRUARY 2023 THE 3/4" PIPE OVER A CONCRETE MONUMENT CALLED OUT IN CORNER CERTIFICATE RECORDED IN BOOK 1 ON PAGE 88 HAS APPARENTLY BEEN GRADED OUT OR COVERED WITH FILL DURING THE CONSTRUCTION OF THE ADJACENT LAGOON. PROBED AND SEARCHED AREA BUT WAS UNABLE TO FIND THE MONUMENTS.

SET A 5/8" X 30" REBAR BY EXTENDING A LINE EASTERLY RECORDED DISTANCE (2649.4') FROM THE SOUTHWEST CORNER OF SEC. 15 THROUGH THE SE CORNER OF THE SW-SW AS SHOWN ON THE PLAT RECORDED IN BOOK 224 ON PAGE 450. THE DISTANCE NORTH TO THE CENTER OF SECTION MATCHES WITHIN REASON



FEBRUARY 2023 IT APPEARS TWO DIFFERENT MONUMENTS HAVE BEEN USED FOR THIS CORNER ACCORDING TO THE CORNER CERTIFICATES RECORDED IN BOOK 1 ON PAGE 126 AND 370. LS 14416 NOTED BOTH CORNERS ON HIS PLAT RECORDED IN BK 2009 PG 6375. BOTH MONUMENTS HAVE BEEN OBLITERATED BY AN ASPHALT OVERLAY.

FOUND A MAG NAIL IN THE VICINITY OF THE CORNER. CONTACTED THE COUNTY ENGINEER AND LOCAL SURVEYORS BUT WAS UNABLE TO TRACE THE ORIGINS OF THE MAG NAIL. THE CURRENT NAIL IS APPROXIMATELY 0.8' EAST AND 1' NORTH OF THE CALCULATED POSITION EXTENDING A LINE WESTERLY RECORD DISTANCE FROM THE NE CORNER OF SEC. 22 THROUGH THE NE CORNER OF PARCEL G (BK 2009 PG 6375). THE DISTANCE WEST TO THE NORTH 1/4 CORNER OF 22-76-18 IS ALSO APPROXIMATELY 0.73 FEET SHORT (BK 234 PG 204). HOWEVER, THE DISTANCE SOUTH TO THE FOUND MAG NAIL AT THE SW CORNER OF THE NE-NE OF SEC. 22 MATCHES THAT OF RECORD (1322.85' M VS 1322.84' R). DUE TO THE CONFLICTING EVIDENCE AND AN UNWILLINGNESS TO SET A SECOND NAIL, THE FOUND MAG WAS HELD AND TIED OUT.

I hereby certify that this land surveying document was prepared and the related survey work was performed by me or under my direct personal supervision and that I am a duly licensed Professional Land Surveyor under the laws of the State of Iowa.

Bobby J. Maddaleno 3-8-23

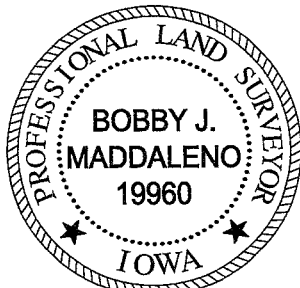
Bobby J. Maddaleno, P.L.S.

Date

License number: 19960

My license renewal date is December 31, 2023

SEAL



List Corners to be Indexed			
Corners	Section	Township	Range
S 1/4 COR.	15	76	18
SE COR. SW-SE	15	76	18

pd \$700 check - Ret G+A env

