

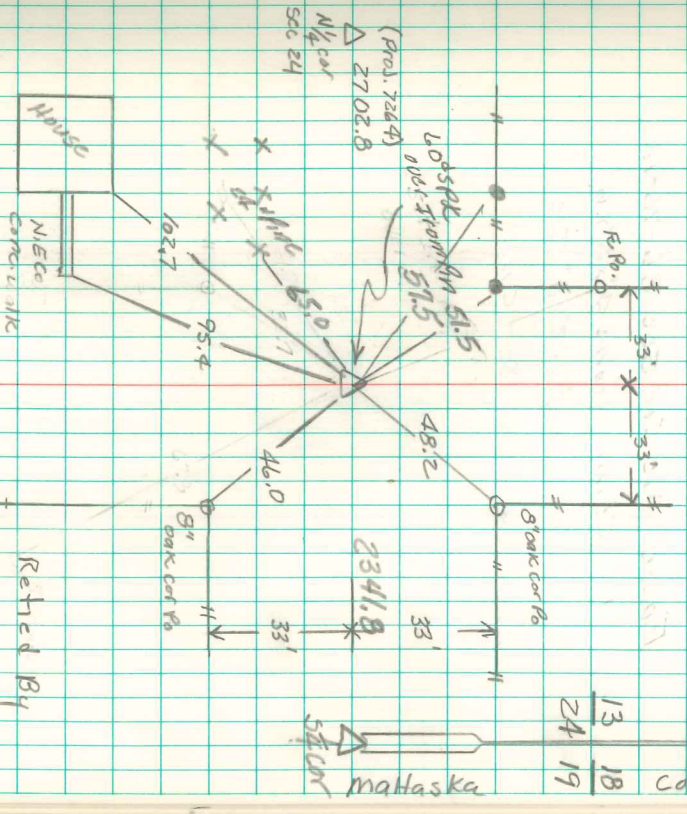
N.E. Cor. Sec 24-76-18

Set: 11-10-39

Notes: Kennedy, Ogden, Luther & Frazier.

Revised Apr. 1-24-1941

Found Limestone 28" x 7" x 1"
1-1/2" Horseshoe Tile, Broken 9" long
Placed Tile N.E.S. under c.m.
" Stone on N. side c.m.



Revised By
L. Nyckewicz
April 16-1980