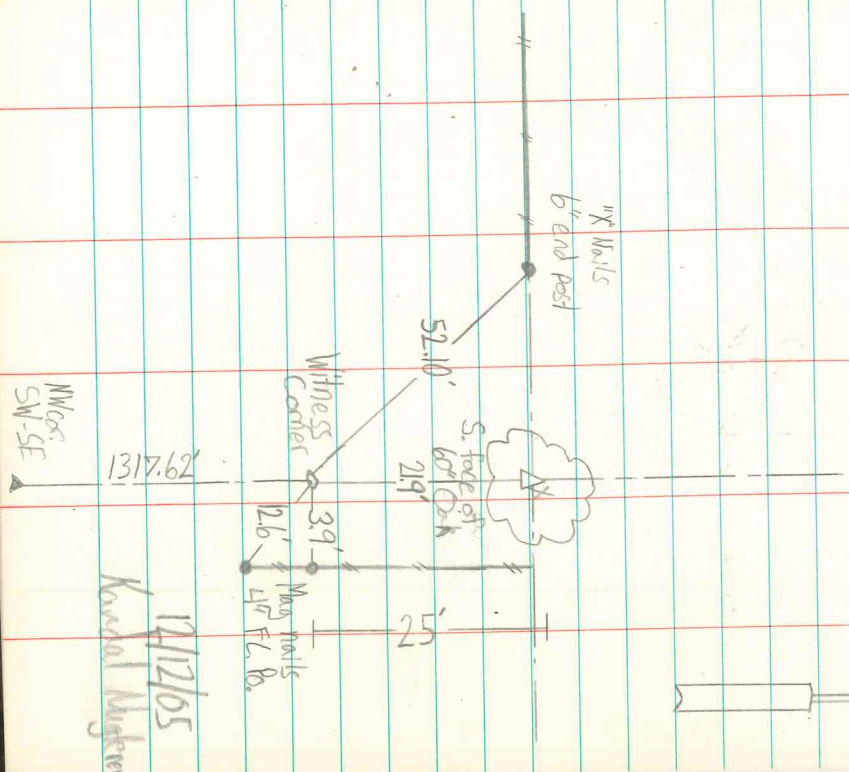


Center Sec. 27-76-18

Call center on line between E<sup>4</sup> cor.  
& W<sup>4</sup> cor. of sec 27 at double  
the distance between E<sup>4</sup> cor. &  
the E<sup>1/4</sup> cor. (existing).

Corner falls in SW part of 60"  
Oak at old fence cor.

27



12/12/05  
Kendal Nielsen

NW 1/4  
SW 1/4

1317.62'