



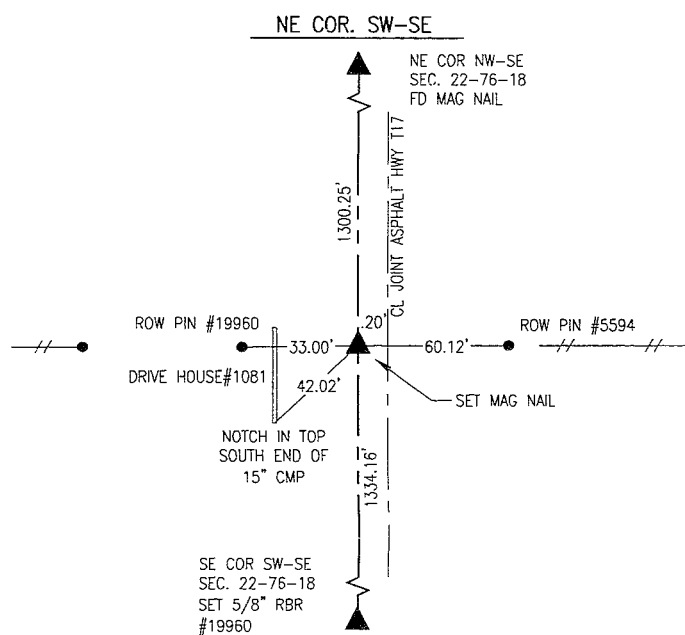
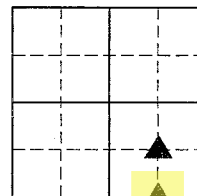
GARDEN & ASSOC.

P.O. Box 451, Oskaloosa, Iowa 52577-0451 Phone: (641)672-2526

KAREN SCHWANEBECK, RECORDER
MARION COUNTY IOWA

UNITED STATES PUBLIC LAND SURVEY CORNER CERTIFICATE
OF

Land Survey Monuments situated in Section 22, Township 76, Range 18, of the Fifth Principal Meridian, MARION County, Iowa. Previously recorded in NO CERTIFICATE OF RECORD in County Recorder's Office. Monument Description and Remarks: SEE BELOW

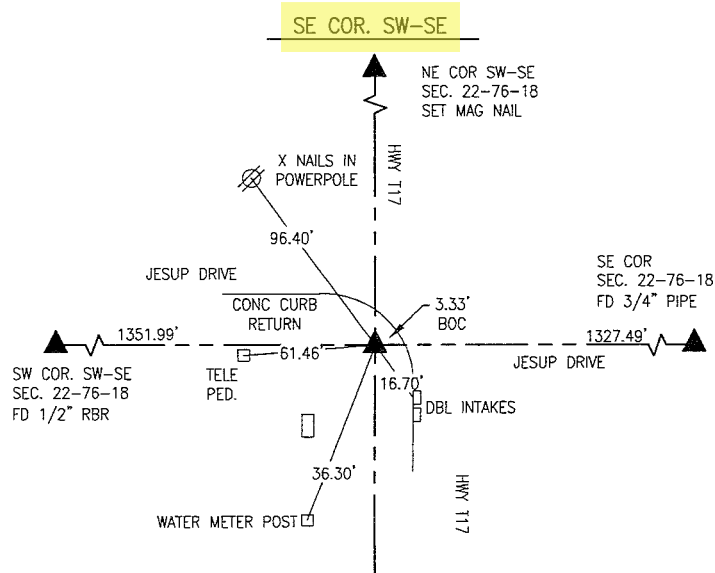


DECEMBER 1977
LS 6708 SURVEYED A PARCEL IN THE NW-SE OF SEC. 22-76-18 AS SHOWN ON AFFIDAVIT EXPLANATORY TITLE RECORDED IN BOOK 4K ON PAGE 432. HE NOTED THE EAST END OF THE FENCE RUNNING THE NORTH LINE OF SW-SE WAS APPROXIMATELY 16.5 FEET NORTH OF A MIDPOINT SPLIT BETWEEN THE 1/4-1/4 CORNERS. HE DID NOT MONUMENT THE CORNER BUT ACCORDING TO HIS NOTES HE FELT POSSESSION WOULD PROBABLY BE TO THE FENCE LINE.

NOVEMBER 1995
LS 5594 SET A MAG NAIL AT THIS CORNER AS PART OF THE SURVEY FOR PARCEL B RECORDED IN BOOK 243 ON PAGE 232. HIS POSITION LINED UP WITH THE EXISTING FENCES EAST AND WEST.

JANUARY 1996
LS 3754 FOUND THE MAG NAIL AND TIED OUT THE CORNER ACCORDING TO THE CORNER CERTIFICATE RECORDED IN BOOK 1 ON PAGE 263.

JUNE 2021
THE MONUMENT HAS BEEN OBLITERATED BY AN ASPHALT OVERLY. USED EXISTING TIES AND PINS FROM PARCEL B TO RE-SET THE CORNER. SET MAG NAIL AT THAT LOCATION. ALTHOUGH THE POSITION DOES NOT MATCH THE MIDPOINT SPLIT OF CORNERS TO THE NORTH AND SOUTH, IT DOES MATCH EXISTING FENCES EAST AND WEST.



NOVEMBER 1995
LS 5594 FOUND A 1" REBAR AND TIED OUT CORNER AS SHOWN ON THE CORNER CERTIFICATE RECORDED IN BOOK 1 ON PAGE 255.

JUNE 2021
CORNER HAS BEEN OBLITERATED BY ROADWORK. EXTENDED A LINE FROM THE SW COR SW-SE THROUGH THE SE CORNER OF PARCEL E (BOOK 2017 PAGE 1141) RECORD DISTANCE EAST TO RE-SET CORNER. SET 5/8" X 30" REBAR WITH YELLOW CAP #19960 AT THAT LOCATION. THE DISTANCE EAST TO THE SE CORNER OF 22-76-18 MATCHES THAT OF RECORD (1327.49 M VS. 1327.48 R)

I hereby certify that this land surveying document was prepared and the related survey work was performed by me or under my direct personal supervision and that I am a duly licensed Professional Land Surveyor under the laws of the State of Iowa.

Bobby J. Maddaleno

7-15-21

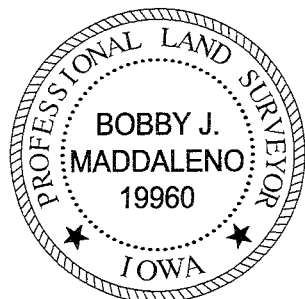
Bobby J. Maddaleno, P.L.S.

Date

License number: 19960

My license renewal date is December 31, 2021

SEAL

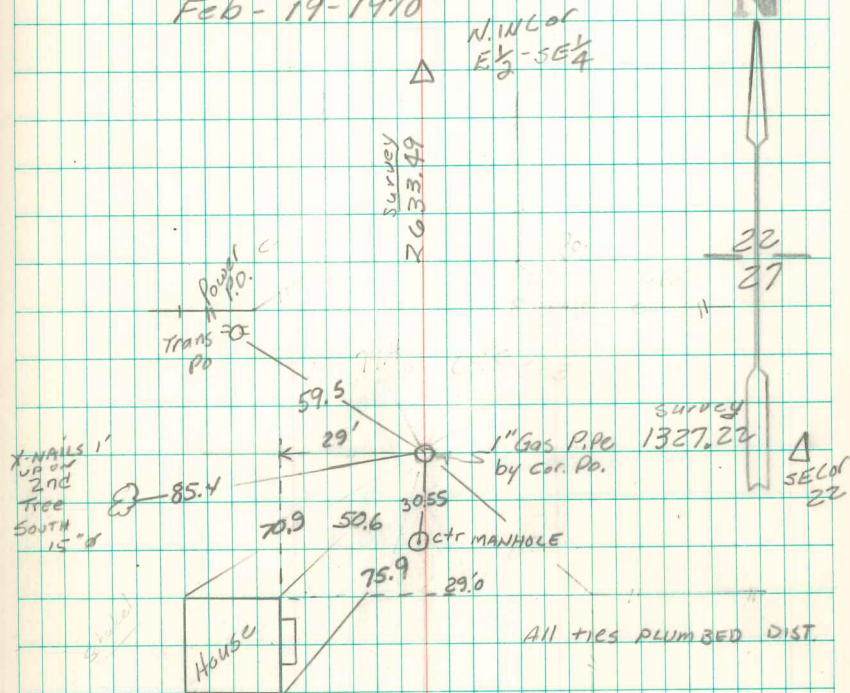


List Corners to be Indexed			
Corners	Section	Township	Range
NE COR. SW-SE	22	76	18
SE COR. SW-SE	22	76	18

PD #7006 - Rest G&A Env.

SW $\frac{1}{4}$ Cor SE $\frac{1}{4}$ Sec 22-76-18

Feb-19-1970



Found & Retied
By Garden Eng.

Nugteren, oldfield
March 26-1976

TIES OK 8/16/83 SWR

RETIED BY PEEGAN

MOLL 9-17-1984

TIES OK 6/19/86 TP