



Document 22-1629

Book 2022 Page 1629 Type CORNR Pages 1
Date 3/28/2022 Time 3:01 PM
Rec Amt \$7.00



GARDEN & ASSOC.

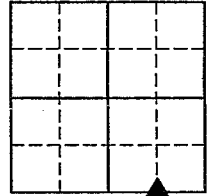
P.O. Box 451, Oskaloosa, Iowa 52577-0451 Phone: (641)672-2526

KAREN SCHWANEBECK, RECORDER
MARION COUNTY IOWA

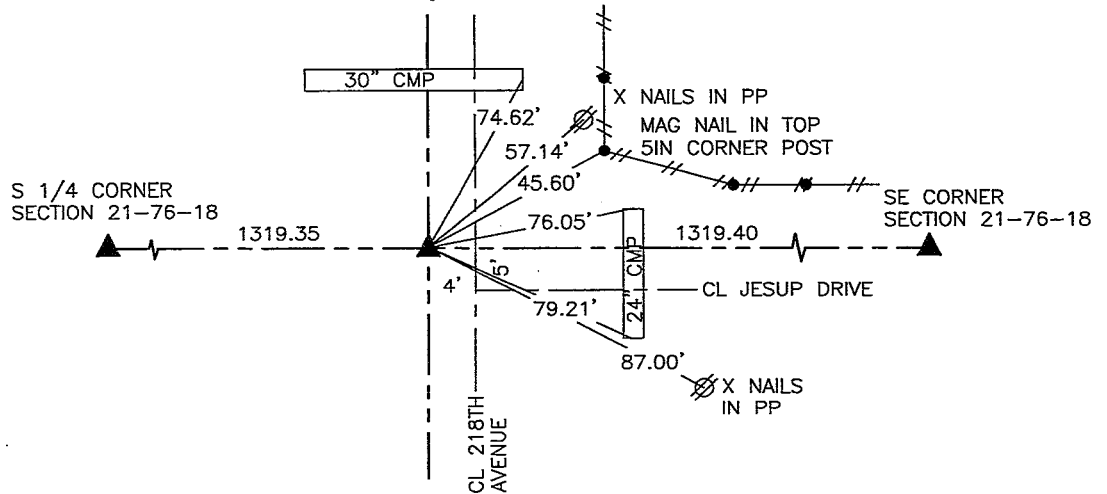
UNITED STATES PUBLIC LAND SURVEY CORNER CERTIFICATE

OF

Land Survey Monuments situated in Section 21, Township 76, Range 18, of the Fifth Principal Meridian, MARION County, Iowa. Previously recorded in NO CERTIFICATE OF RECORD in County Recorder's Office. Monument Description and Remarks: SEE BELOW



SW CORNER SE-SE



MARCH 8, 2022

ESTABLISHED CORNER ON LINE AND MIDWAY BETWEEN THE SE CORNER AND S 1/4 CORNER OF SECTION 21-76-18. CORNER LOCATION SUPPORTED BY INFORMATION OBTAINED DURING A 2005 SURVEY RECORDED IN BOOK 2005 PAGE 6079.

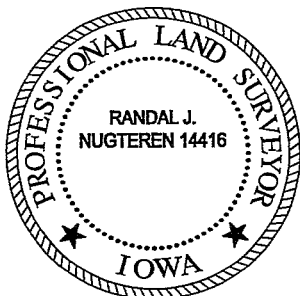
I hereby certify that this land surveying document was prepared and the related survey work was performed by me or under my direct personal supervision and that I am a duly licensed Professional Land Surveyor under the laws of the State of Iowa.

Randal J. Nugteren March 23, 2022
Randal J. Nugteren, P.L.S. Date

License number: 14416

My license renewal date is December 31, 2022

SEAL



List Corners to be Indexed			
Corners	Section	Township	Range
SW CORNER SE-SE	21	76	18

*Block-Red
G&A Env.*