

KAREN SCHWANEBECK, RECORDER
MARION COUNTY IOWA

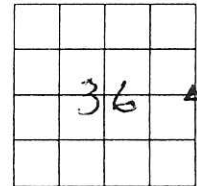
Prepared by Abie C. Davis, P.E. & L.S., 1428 Oregon St., Knoxville, IA 50138 (641) 842-5863

UNITED STATES PUBLIC LAND SURVEY CORNER CERTIFICATE OF

Land survey Monuments situated in Section 36, Township 76 N, Range 18 W, of the Fifth Principal Meridian, Marion County, Iowa.

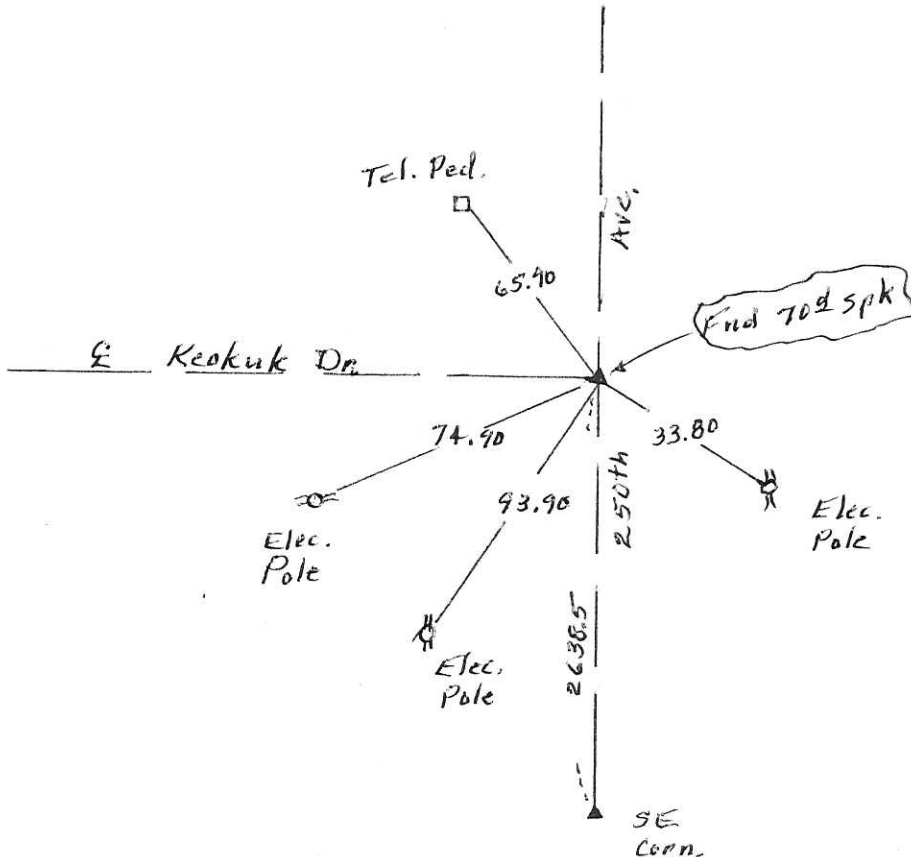
Previously recorded in N/A in County Recorders Office.
(book, page, document number, etc.)
Show reason for preparing this certificate, the evidence and detailed procedures used in establishing the corner positions and monumentation found or placed

Monument Description and Remarks: Find 70^d spk over
Iron Pin over C.M.



PLAN - VIEW

(Show a minimum of three reference ties to durable physical objects, relevant monuments and physical conditions that will enable recovery of the corner.)



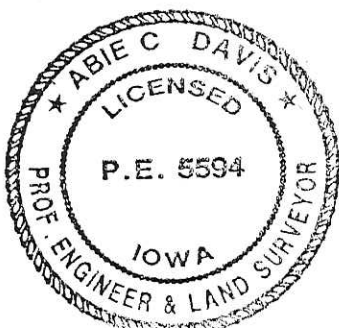
I hereby certify that the survey work was completed and this land surveying document was prepared by me or under my direct personal supervision and that I am a duly licensed land surveyor under the laws of the state of Iowa

Signature: Abie C Davis
Abie C. Davis, P.E. & L.S.

Date: 7/1/16 Reg. No. 5594

My license renewal date is December 31, 2017

SEAL



List Corners to be Indexed			
Corners	Section	Twp	Range
E4	36	76 N	18 W

pd. 7. Check, Ret Abie Davis - will pick up

Found Broken Limestone also
 2-2" Horse shoe tile.
 set c.m.

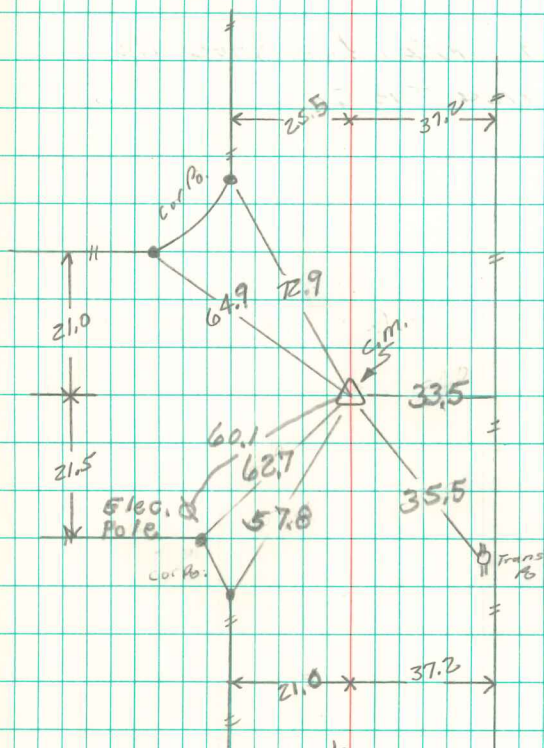
26349 West to Ctr. 36

E 1/4 Cor sec, 36-76-18

Set: Nov-25-39

Notes: -

Revised by
 Johnson, Mallett & Pinson
 Aug-11-47



6

County

Mathaska

revised 9/28/02
 Craig Johnstone