



GARDEN & ASSOC.

P.O. Box 451, Oskaloosa, Iowa 52577-0451 Phone: (641)672-2526

KAREN SCHWANEBECK, RECORDER
MARION COUNTY IOWA

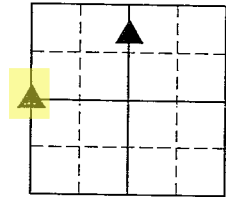
UNITED STATES PUBLIC LAND SURVEY CORNER CERTIFICATE

OF

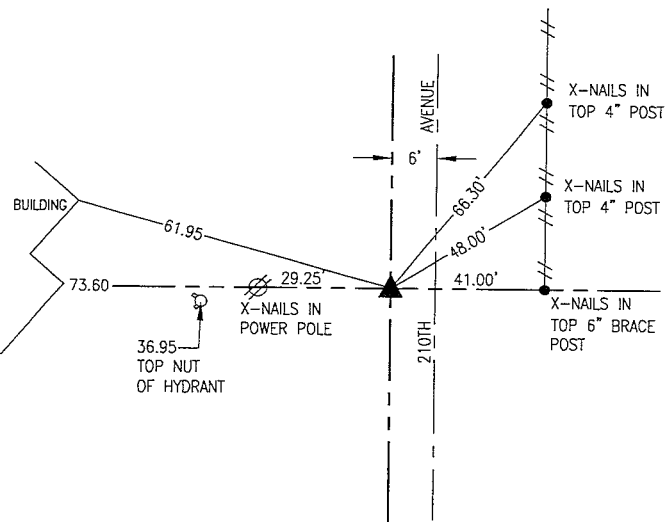
Land Survey Monuments situated in Section 4, Township 76, Range 18, of the Fifth Principal Meridian, MARION County, Iowa. Previously recorded in SEE BELOW in County Recorder's Office.

Monument Description and Remarks: SEE BELOW

W 1/4 CORNER PREVIOUSLY RECORDED IN BOOK 1 PAGE 422



WEST 1/4 CORNER



OCTOBER 1992 IDOT PLS 6707

FOUND BROKEN SANDSTONE WITH 1/2" IRON PIN DRIVEN IN CENTER.

JUNE 29, 1998 PLS 5594

FOUND IRON PIN 6" DEEP.

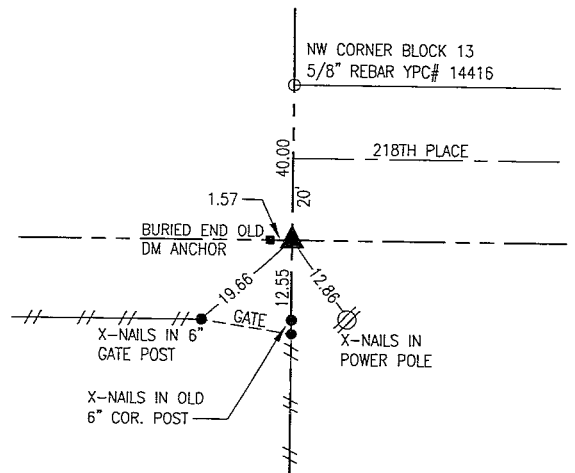
JULY 1, 2008 PLS 14416

FOUND PK NAIL IN ASPHALT ABOVE 1/2" IRON PIN DRIVEN IN SANDSTONE.

MARCH 7, 2021 PLS 14416

FOUND PK NAIL IN ASPHALT FROM INFORMATION ON SURVEY IN BOOK 2008 PAGE 4097.

STONE 40' SOUTH OF
NW CORNER BLK 13
SUB. OF E. 1/2



MAY 1969 PLS 6708

FOUND 4" TILE UNDER LIMESTONE 24" DEEP. SET 3/4" PIPE ABOVE STONE. TILE AND STONE ARE SHOWN ON PLAT OF THE SUBDIVISION OF THE EAST HALF OF SECTION 4-76-18 IN IRREGULAR SURVEY BOOK 3 PAGE 66.

APRIL 2002 PLS 14416

FOUND 3/4" PIPE ABOVE LIMESTONE USING 1969 REFERENCE TIES FOR SURVEY IN BOOK 2002 PAGE 5241.

FEBRUARY 23, 2021 PLS 14416

FOUND 3/4" PIPE 4" DEEP

I hereby certify that this land surveying document was prepared and the related survey work was performed by me or under my direct personal supervision and that I am a duly licensed Professional Land Surveyor under the laws of the State of Iowa.

Randal J. Nugteren April 26, 2021
Randal J. Nugteren, P.L.S. Date

License number: 14416

My license renewal date is December 31, 2022

SEAL



List Corners to be Indexed			
Corners	Section	Township	Range
WEST 1/4 CORNER	4	76	18
STONE 40' SOUTH OF NW CORNER BLK 13 SUB. OF E. 1/2	4	76	18

add. # 7-CM, Post-Standard & Assoc. - Enw

Found Pear shaped sandstone
over 12" O Tile 15" Long on END

Lowered Tile in its original Position
& set c.m.

stone on top c.m.

E. 1/4 Cor Sec 5-76-18

Set: 6-25-41

Notes: Wignall

△ N.E. 1/4 Sec 5-76-18

