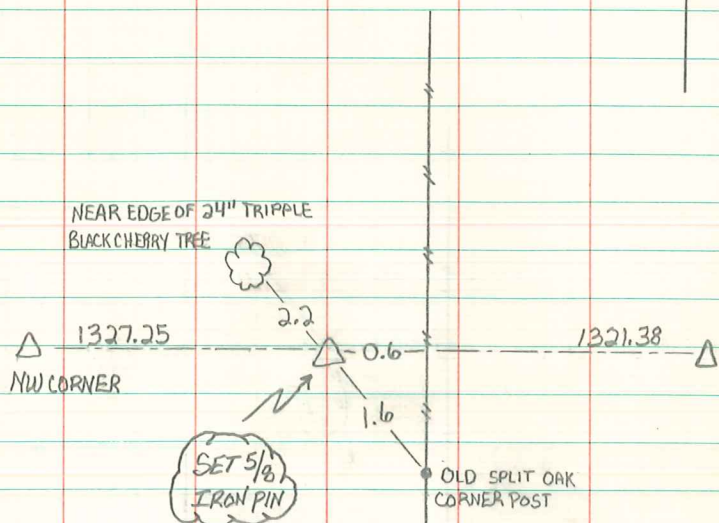


NE CORNER NW FR-NE FR

N



FOUND 2 2x4x8" POINTED PIECES OF VERY OLD  
CONCRETE CLEARLY PLANTED IN PLACE AT SURFACE  
1.6' NW OF OLD 8" SPLIT OAK CORNER POST, VERY  
OLD FENCE TIED OFF TO THE SOUTH.  
SET 5/8" x 30" REBAR ON SOUTH SIDE OF CONCRET

NOV 30, 2011

RANDAL J. NUGTEREN