



KAREN SCHWANEBECK, RECORDER
MARION COUNTY IOWA

Prepared By: J. Brian Morrissey, Morrissey Surveying & Consulting, LLC, 1405 Hwy. G28, Otley, Ia. 50214, 515-480-2531

UNITED STATES PUBLIC LAND SURVEY CORNER CERTIFICATE OF

Land Survey Monuments situated in Section 8, Township 76N, Range 18W, of the Fifth Principal Meridian, Marion County, Iowa.
Previously recorded in N/A in the County Recorder's Office.
(book, page, document number, etc.)

(Show reason for preparing this certificate, the evidence and detailed procedures used in establishing the corner positions and monumentation found or placed.)

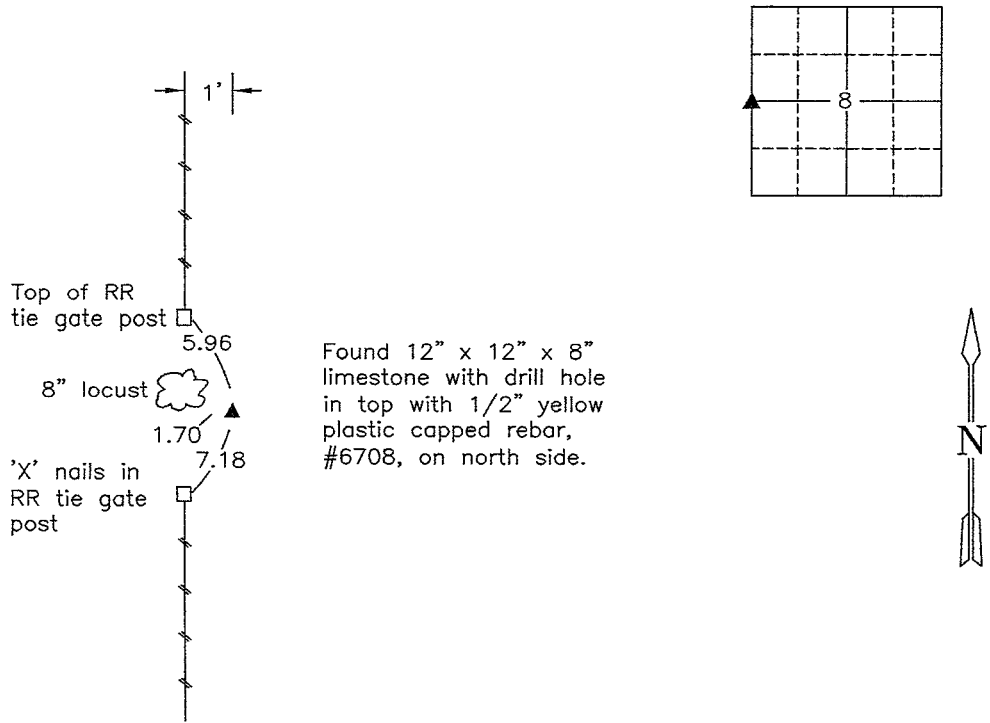
Monument Description and Remarks: Found 12" X 12" X 8" limestone with drill hole in top, with 1/2" yellow plastic capped rebar, #6708, on north side.

No certificate of record.

This Corner was used for a Plat of Survey recorded in Bk. 2018, P. 5437, in the Marion County Recorder's Office.

PLAN VIEW

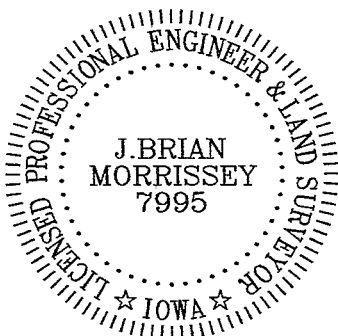
(Show a minimum of three reference ties to durable physical objects, relevant monuments and physical conditions that will enable recovery of the corner.)



NW Cor., SW 1/4, Section 8

Date of Survey: 7/7/18

NOTE: ALL TIES TO BRASS DISK OR YELLOW/ORANGE SURVEY MARKER UNLESS NOTED.



I hereby certify that this land surveying document was prepared and the related survey work was performed by me or under my direct personal supervision and that I am a duly Licensed Land Surveyor under the laws of the state of Iowa.

Signature: J. Brian Morrissey Date: 7/6/21
J. Brian Morrissey

License number 7995.

My license renewal date is December 31, 2021

948-17-2/5

Printed - J. Brian Morrissey

Dug hole 6' x 24' x 3' deep along
N. & S. Fe.

Found No Evidence of Co.
on statement of Land owners
on East & West sides of this
Line that the corner stone
Formerly was in sight Near
Center of Gate, & that it was
Knocked out by wagon traffic after
erosion had EXPOSED it. I
Reestablished the corner on this old
established & undisputed Fence line

set c.m. over broken Chinaware
Charcoal, Brick-Bat.

Placed 8" x 12" x 12" Limestone over
c.m.

E $\frac{1}{4}$ Cor 7-76-18

Set April 1941

Notes Nandell

