

Found sand & stone Broken in  
Pieces over 2-2 1/2"  $\Delta$  Tile

set c.m. over on one  $\Delta$  Tile

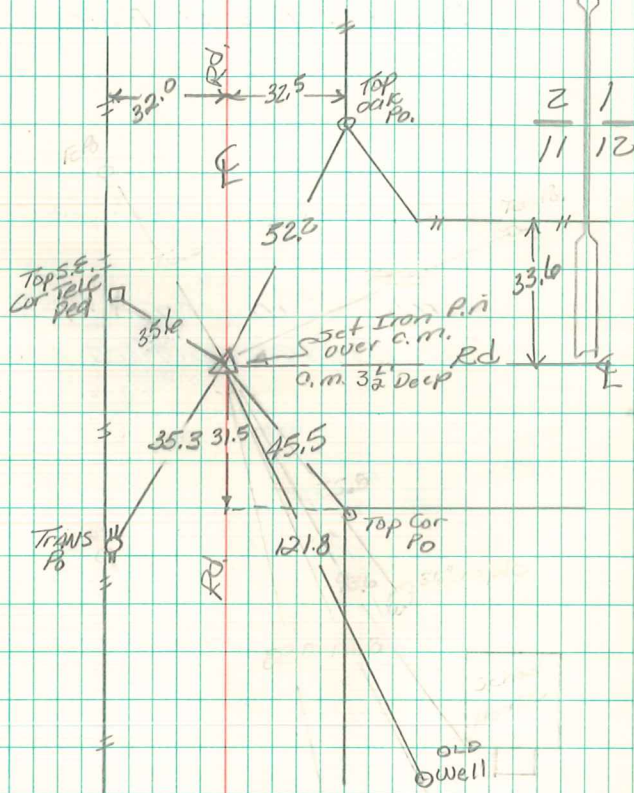
C.m. 10" Below surface stone  
around c.m.

N.E. Cor 11-77-19

Set- 10-22-40

Notes - Kennedy

Party - Shore - Mitchell



FOUND & RETIED Aug 17, 1981  
Mall, Pregon, Stone  
12/30/76 Abie Davis