

This corner is in a drainage ditch under a wood bridge. Reestablished on Direct Line between Sec. Corners at midpoint between same, on line with stone at E $\frac{1}{4}$ Cor 7 & Cor. Past at cen sec 7. on line with division Fe west of Cor, but 2' south of Cor. to same.

set Conc. Witness man marked
12+7 33.0' FT west of True Corner.

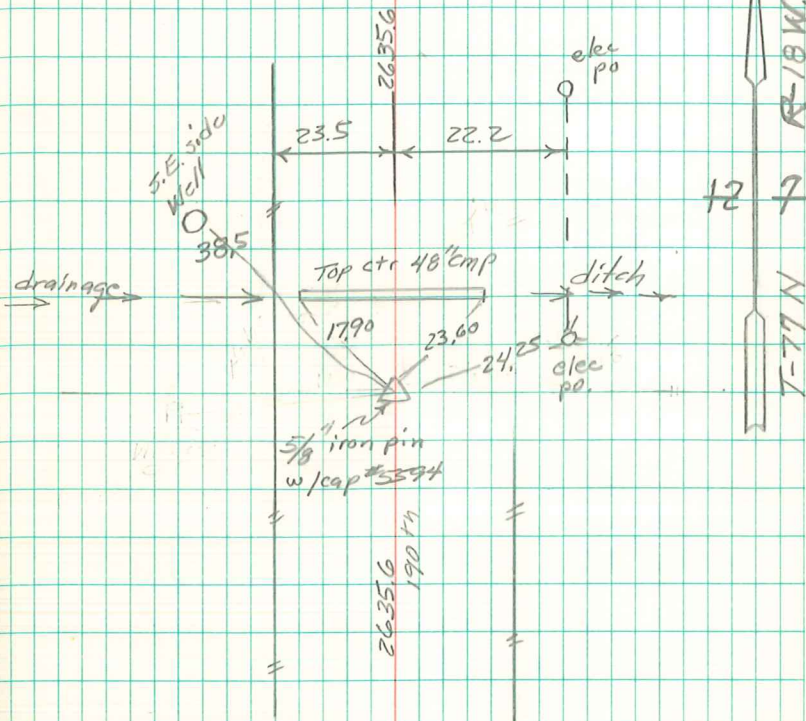
set 8"x8"x12" stone over 1-HorseShoe
Tile at True Corner.

E $\frac{1}{4}$ Cor. sec 12-77-19

12

Set: July - 5 - 1941

Notes: Barker-Mandell & Alsberry



orig. corner & witness corner destroyed by
drainage ditch & culvert construction. set corner
at tie dist. from well NW & on line between
NW Corner & SW Corner. Abie Davis 1/17/02