

Slo  
In  
Cut or  
0  
1  
2  
3  
4  
5  
6  
7  
8  
9  
10  
11  
12  
13  
14  
15  
16  
17  
18  
19  
20  
21  
22  
23  
24  
25  
26  
27  
28  
29  
30  
31  
32  
33  
34  
35  
36  
37  
38  
39  
40

Found 2-3" O tile

set c.m.

1/8/87 - Fnd WPA C.M. 18" Deep on SE side of 10" Hedge cor. post.

Set 3/4" x 24" pipe on E. side of C.M.

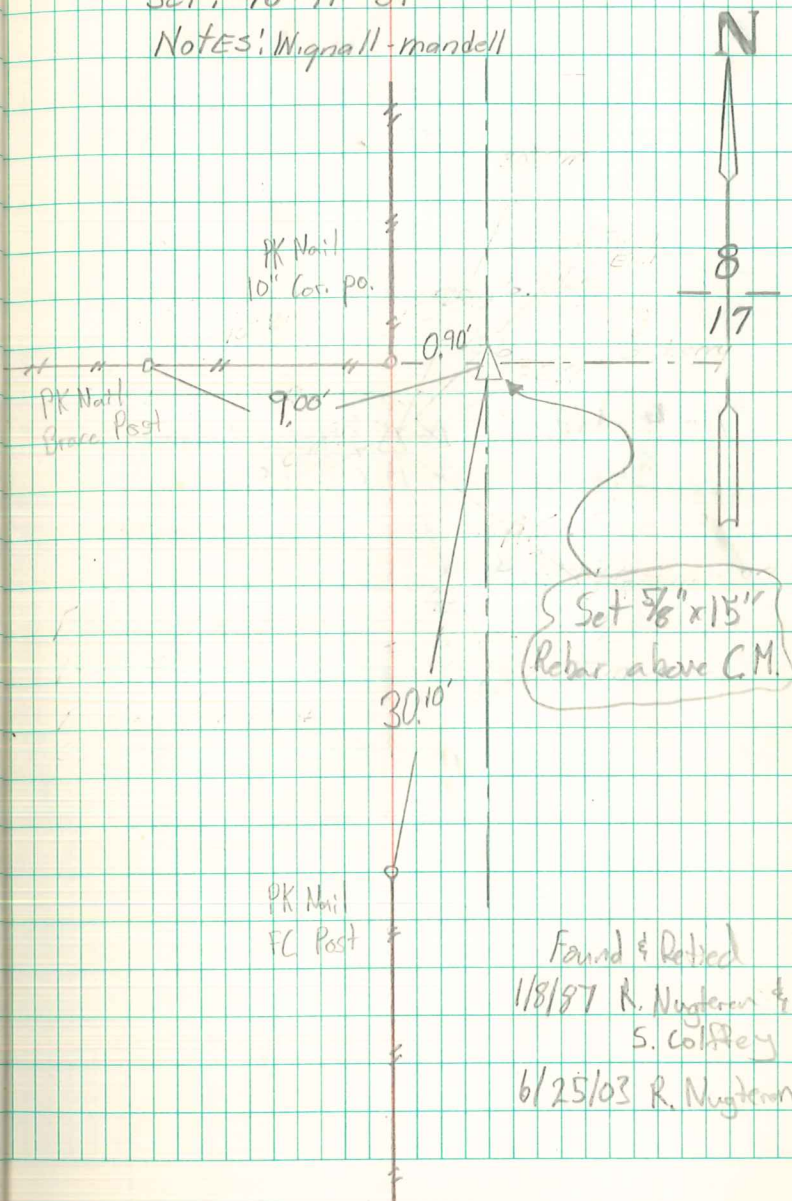
Set 3/4" x 24" Pipe above C.M.

6/11/03 - Fnd WPA C.M. 18" Deep on SE side of 10" Hedge cor. post.  
3/4" pipe above C.M. was removed

N 1/4 Cor Sec 17-77-19

Set: 10-11-39

Notes: Wignall-mandell



Found & Retied  
1/8/87 R. Nugent &  
S. Colapete  
6/25/03 R. Nugent