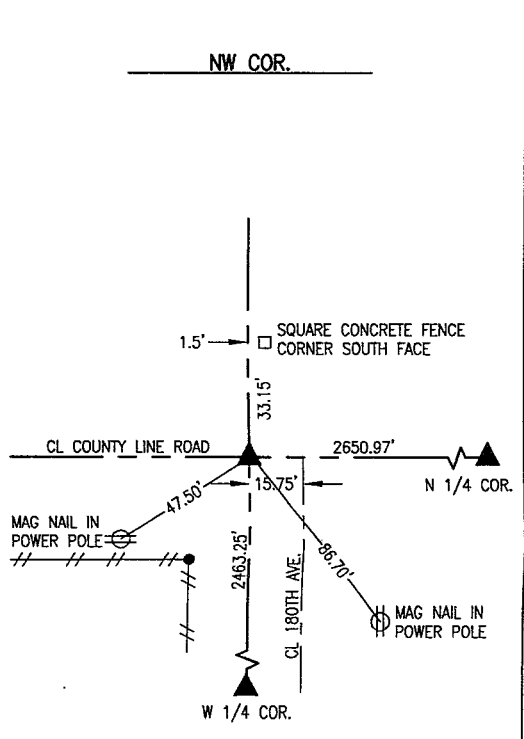
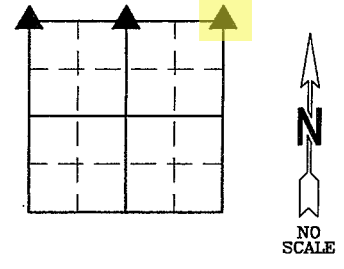


NAOMI ELLIS, RECORDER
 MARION COUNTY IOWA

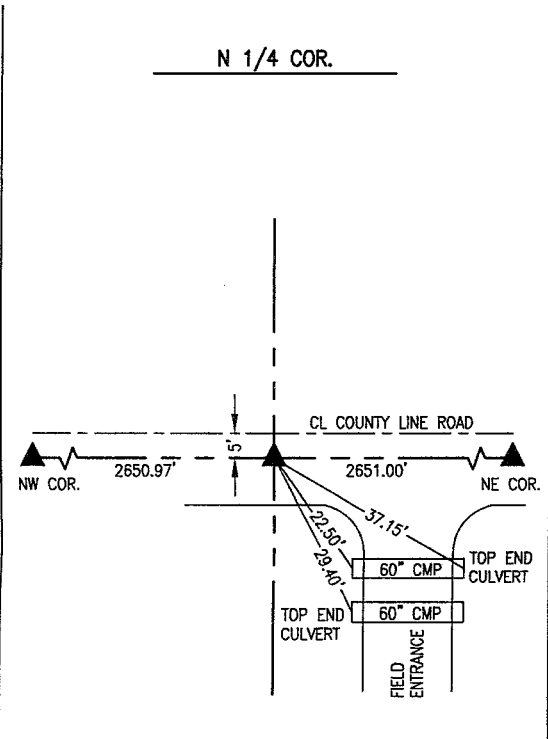
G GARDEN & ASSOC. P.O. Box 451, Oskaloosa, Iowa 52577-0451 Phone: (641)672-2526

UNITED STATES PUBLIC LAND SURVEY CORNER CERTIFICATE
 OF

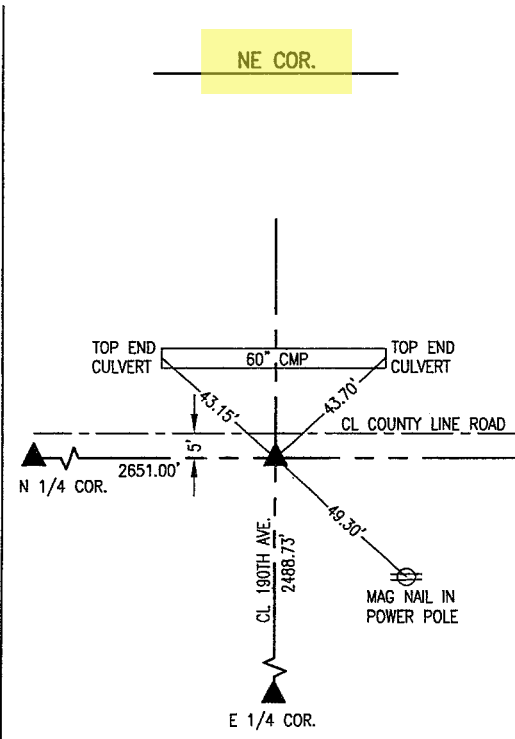
Land Survey Monuments situated in Section 1, Township 77, Range 19, of the Fifth Principal Meridian, MARION County, Iowa.
 Previously recorded in N/A in County Recorder's Office.
 Monument Description and Remarks: SEE BELOW



MAY 1, 1975-MARION COUNTY ROAD DEPT:
 FOUND WPA CONCRETE MONUMENT.
 FEB. 11, 1987-MARION COUNTY ROAD DEPT:
 FOUND C.M. SET 1/2" I.P. OVER C.M.
 DEC. 5, 2022-PLS 14416:
 FOUND 5/8" REBAR WITH LARGE YPC 5" DEEP.



MAY 1, 1975-MARION COUNTY ROAD DEPT:
 FOUND WPA C.M. 3' DEEP. SET 1" IRON PIPE
 OVER C.M.
 JULY 6, 1984-PLS 6708:
 FOUND 1" PIPE 6" DEEP. SET 60D SPIKE
 WITH BLUE TOP OVER PIPE.
 DEC. 5, 2022-PLS 14416:
 FOUND 5/8" REBAR WITH LARGE YPC FLUSH
 WITH SURFACE.



JUNE 4, 1971-JASPER COUNTY ROAD DEPT:
 FOUND 5/8" REROD 3" DEEP IN 4" TILE OVER
 WPA CONCRETE MONUMENT.
 OCT. 22, 1979-PLS 6708:
 FOUND 5/8" REBAR 3" DEEP APPROXIMATELY
 5' SOUTH OF CL COUNTY ROAD.
 DEC. 5, 2022-PLS 14416:
 FOUND 5/8" REBAR WITH LARGE YPC 4" DEEP.

I hereby certify that this land surveying document was prepared and the related survey work was performed by me or under my direct personal supervision and that I am a duly licensed Professional Land Surveyor under the laws of the State of Iowa.

Randal J. Nugteren April 1, 2023
 Randal J. Nugteren, P.L.S. Date
 License number: 14416
 My license renewal date is December 31, 2024

SEAL



List Corners to be Indexed			
Corners	Section	Township	Range
NW COR.	1	77	19
N 1/4 COR.	1	77	19
NE COR.	1	77	19

Pd #702 CK - Rnd Garden & Assoc.

Found 5/8" rebar 3" deep approx
5' south of road

BY GARDEN ENGR CO

22 OCT 1979

R. NUGTEGEN

L. REMMARK

N.E. Cor Sec 1-77-19

24

