

NAOMI ELLIS, RECORDER  
MARION COUNTY IOWA



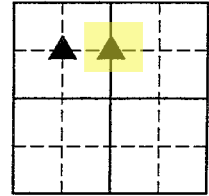
GARDEN & ASSOC. P.O. Box 451, Oskaloosa, Iowa 52577-0451 Phone: (641)672-2526

UNITED STATES PUBLIC LAND SURVEY CORNER CERTIFICATE

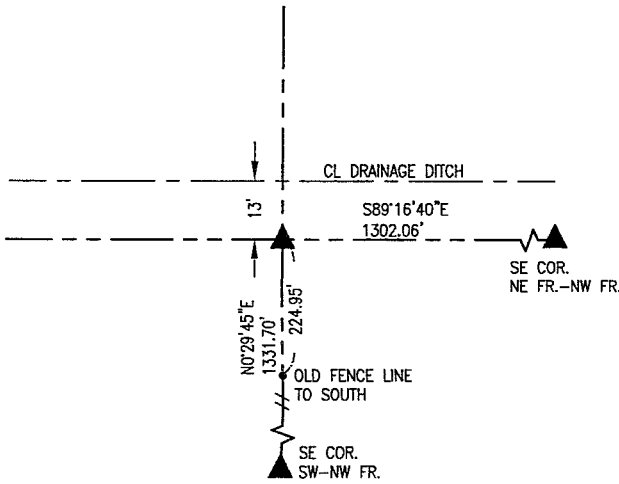
OF

Land Survey Monuments situated in Section 1, Township 77, Range 19, of the Fifth Principal Meridian, MARION County, Iowa. Previously recorded in NO CERTIFICATE OF RECORD in County Recorder's Office.

Monument Description and Remarks: SEE BELOW

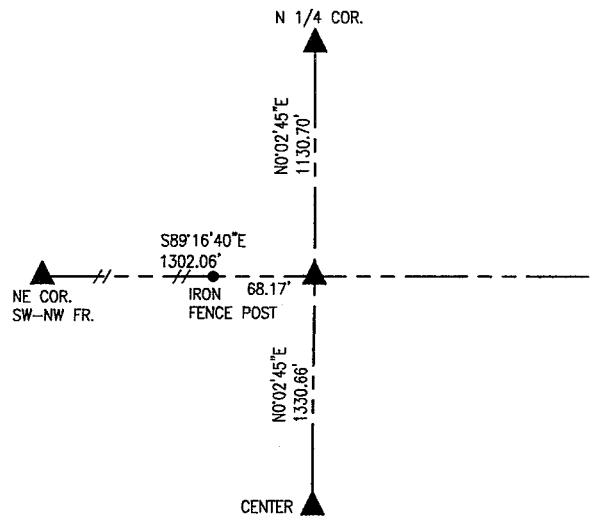


NE COR. SW-NW FR.



JAN. 26, 2022:  
SET 5/8" X 30" REBAR WITH YPC #14416 AT INTERSECTION OF LONG STANDING FENCE LINES SOUTH AND EAST.

SE COR. NE FR.-NW FR.



JAN. 26, 2022:  
SET 5/8" X 30" REBAR WITH YPC #14416 AT INTERSECTION OF LONG STANDING FENCE LINE WEST WITH LINE BETWEEN CENTER AND N 1/4 COR.

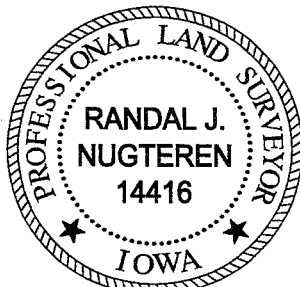
I hereby certify that this land surveying document was prepared and the related survey work was performed by me or under my direct personal supervision and that I am a duly licensed Professional Land Surveyor under the laws of the State of Iowa.

*Randal J. Nugteren* April 1, 2023  
Randal J. Nugteren, P.L.S. Date

License number: 14416

My license renewal date is December 31, 2024

SEAL



List Corners to be Indexed

Corners	Section	Township	Range
NE COR. SW-NW FR.	1	77	19
SE COR. NE FR.-NW FR.	1	77	19

Pl # 72-CK-Ret Garden & Assoc.