

KAREN SCHWANEBECK, RECORDER  
MARION COUNTY IOWA



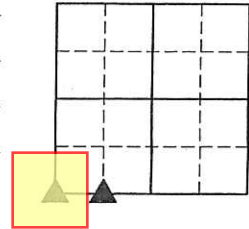
GARDEN & ASSOC.

P.O. Box 451, Oskaloosa, Iowa 52577-0451 Phone: (641)672-2526

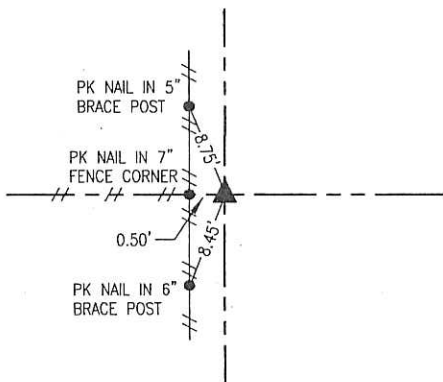
UNITED STATES PUBLIC LAND SURVEY CORNER CERTIFICATE

OF

Land Survey Monuments situated in Section 16, Township 77, Range 19, of the Fifth Principal Meridian, MARION County, Iowa.  
Previously recorded in NO CERTIFICATE OF RECORD in County Recorder's Office.  
Monument Description and Remarks: SEE BELOW



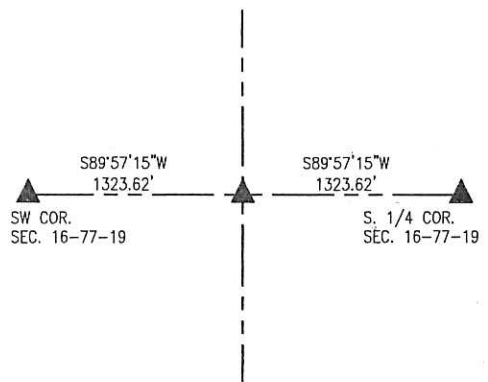
SW CORNER



MAY, 6, 2015  
WPA REFERENCE TIES INDICATE THAT "CONC. MON. WAS SET IN DITCH AT TRUE CORNER." THE "DITCH" HAS SINCE BEEN FILLED IN.

DECEMBER 17, 2015  
SET 5/8" X 36" REBAR ON EAST SIDE OF CORNER POST. CORNER LOCATION IS SUPPORTED BY FENCELINE ALIGNMENT NORTH TO THE WEST 1/4 CORNER OF SECTION 16. CORNER LOCATION IS SUPPORTED BY MEASURED DISTANCE TO WEST 1/4 CORNER COMPARED TO DISTANCE BY JASPER NYE IN SURVEYOR'S RECORD BOOK 2 PAGE 57 IS SIMILAR TO THE MEASURED AND RECORDED DISTANCES FROM WEST 1/4 CORNER TO CENTER OF SECTION 16.

SE CORNER  
W. 1/2-SW 1/4



DECEMBER 17, 2015  
SET 5/8" X 30" REBAR ON LINE AND MIDWAY BETWEEN SW CORNER AND SOUTH 1/4 CORNER OF SECTION 16. SET 5/8" REBAR 15" DEEP IN FIELD. NO PHYSICAL FEATURES NEARBY FOR REFERENCE TIES.

I hereby certify that this land surveying document was prepared and the related survey work was performed by me or under my direct personal supervision and that I am a duly licensed Professional Land Surveyor under the laws of the State of Iowa.

*Randal J. Nugteren* January 22, 2016  
Randal J. Nugteren, P.L.S. Date

License number: 14416

My license renewal date is December 31, 2016

SEAL



List Corners to be Indexed			
Corners	Section	Township	Range
SW COR.	16	77	19
SE COR. W. 1/2-SW 1/4	16	77	19

Publ 700k-Ref Garden & Assoc. enw

Set c.m. inditch at True Corner.

Set witness corner south of True Cor.

Notes : on Finding & setting Lost

N.E. Cor sec 20-77-19

17

